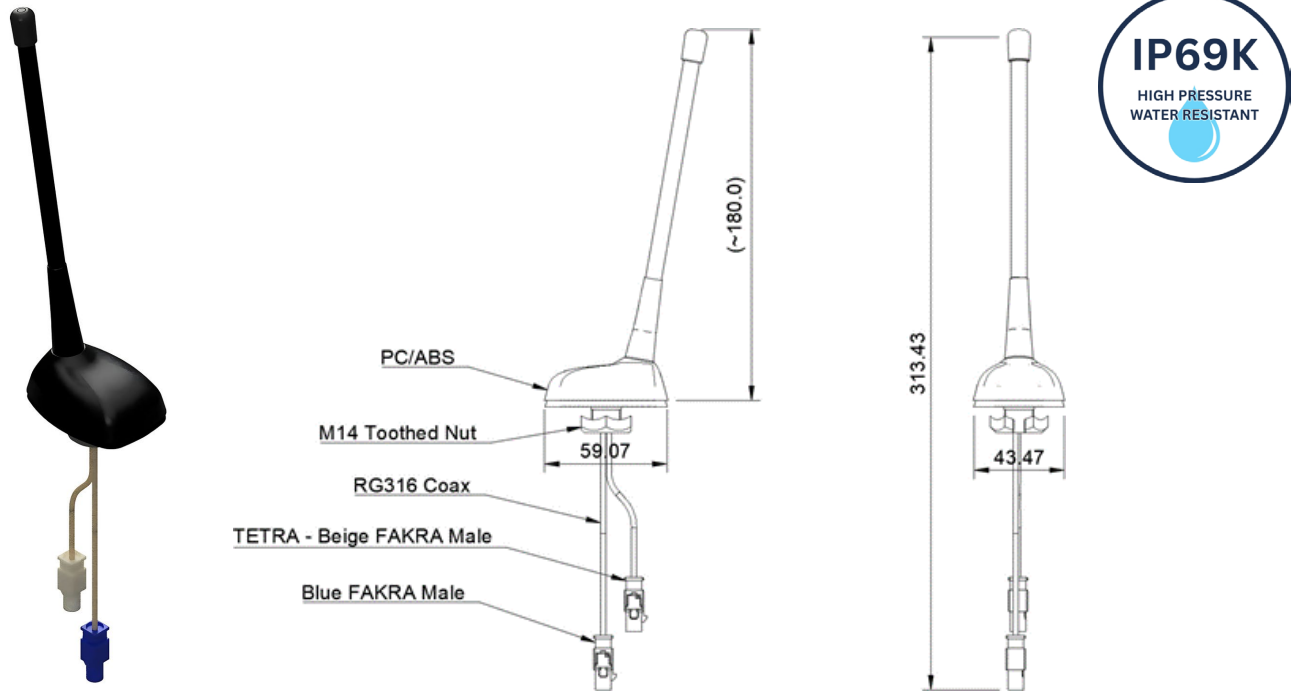


5000-210 The 'Sting' TETRA & GPS Antenna



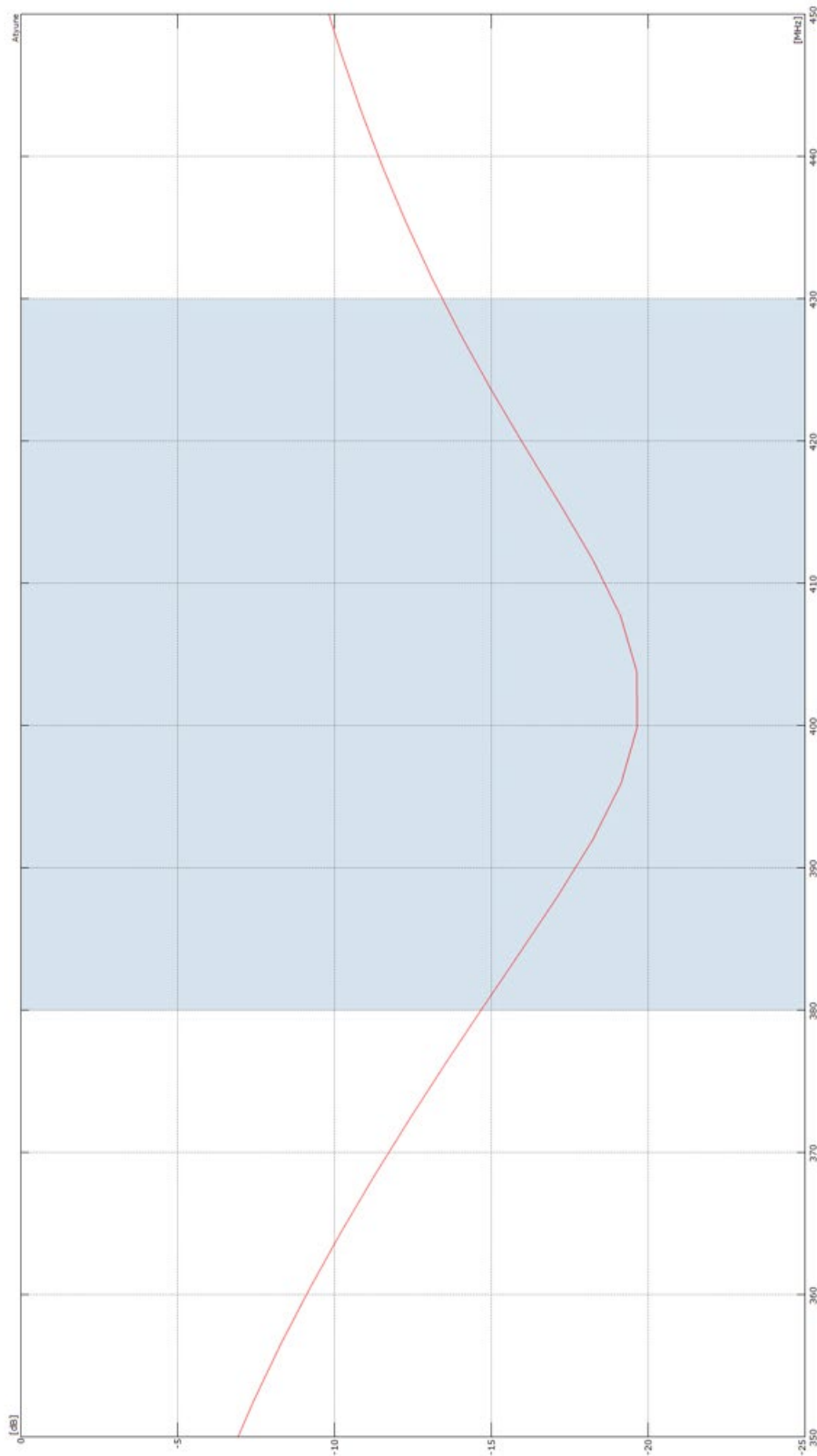
The 'Sting' TETRA & GPS Antenna provides precise navigation and dependable signal reception across **TETRA** and major global satellite systems, including **GPS, QZSS, GLONASS, BeiDou, and Galileo**. Designed with a **compact, rugged housing**, it is suitable for use in harsh and demanding environments. The antenna holds an **IP69K rating**, certifying it as fully **waterproof** and resistant to **dust ingress**, as well as capable of withstanding high-pressure, high-temperature water jets. It delivers **consistent, high-quality performance** and is easily installed across a variety of platforms. This makes it an ideal solution for applications requiring **robust TETRA and GPS connectivity** in mission-critical or industrial contexts.

Technical Specifications

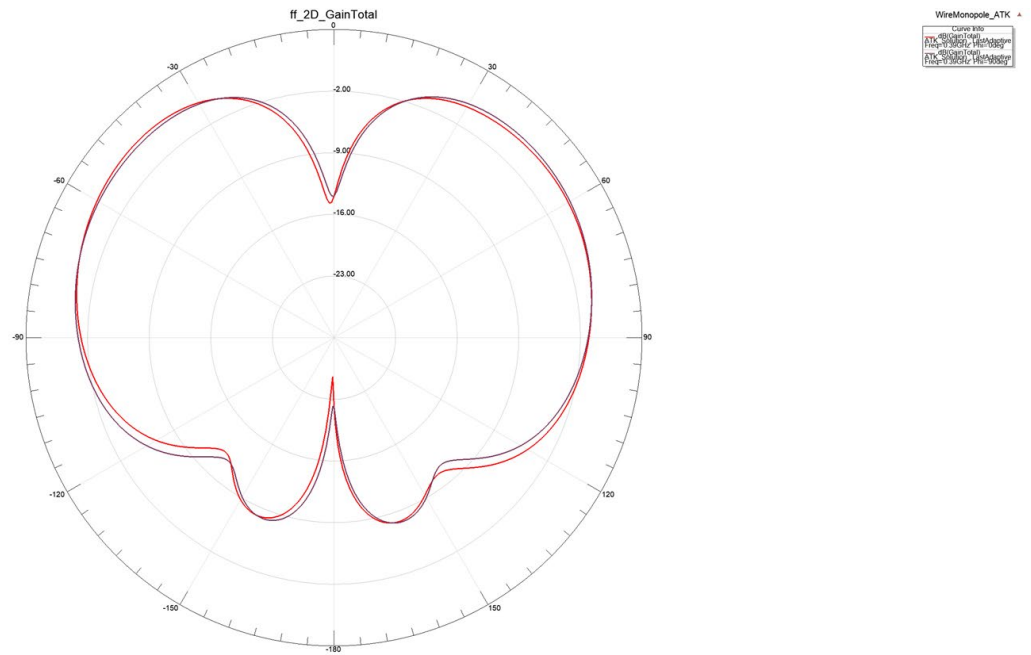
Part No.	5000-210	
Electrical Data		
Band	TETRA	GPS
Frequency Range	380 - 430 MHz	1575 - 1609 MHz
Input Power	50W	LNA Specification: GPS, QZSS, GLONASS, BeiDou, Galileo
Gain	4dBi	27dB
Polarisation	Vertical	RHCP
VSWR	< 2.5:1	27dB
Impedance	50Ω	50Ω
Antenna Connection	Beige Fakra 300mm RG316 (m)	Blue Fakra (m)
LNA Noise Figure	-	1.3dB
Mechanical Data		
Durability	IP69K Rating	
Dimensions (mm)	L59.5 x W43.5 x H14.5	

Subject to change.

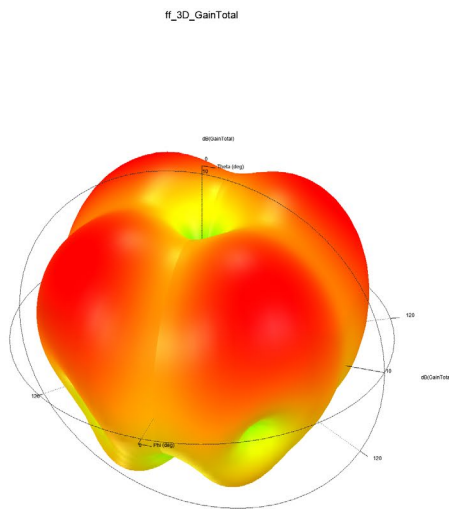
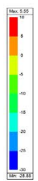
Return Loss



2D Gain



3D Gain



All graphs/diagrams subject to change.

Sure Antennas. 6 Woodway Court, Thursby Rd, Bromborough, Merseyside CH62 3PR, United Kingdom
Schiphol Airport Tetra, Transpolis Park, Siriusdreef 17-27, 2132 WT Hoofddorp, Netherlands

T. +44 (0)151 334 9160 | E. sales@sure-antennas.com

www.sure-antennas.com

A brand of



MOBILE RADIO