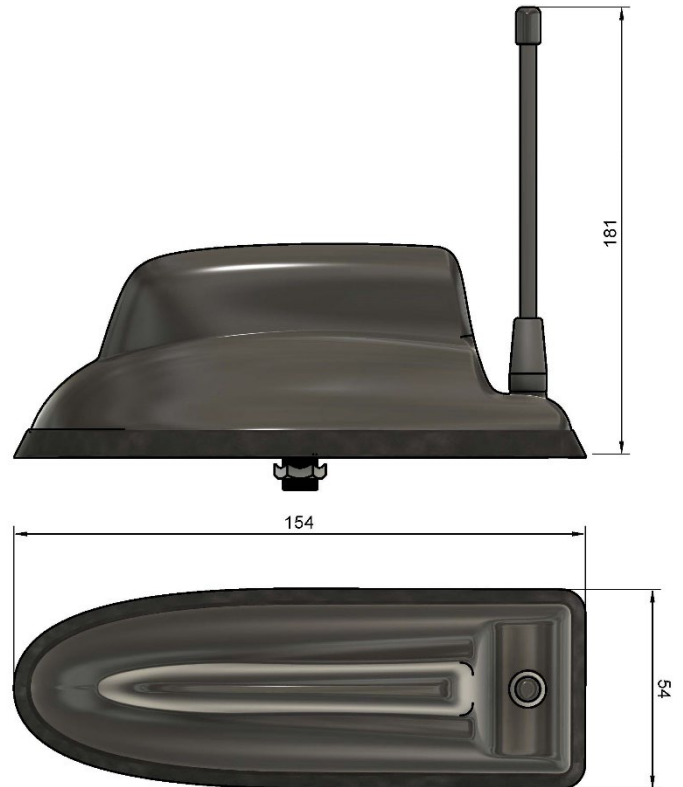


SK0200290 'Mallard' 4-in-1 Antenna Black incl. 5m Coax Cables - TETRA



The 'Mallard' is a low-profile, multifunction antenna designed to **future-proof** blue-light and amber-light vehicle fleets, delivering **up to 9 functions** within a single, panel-mounted unit. This variant features **4 functions**.

With market leading isolation to **support ESN**, as well as your current **TETRA radio**, there is no need to drill multiple holes into your vehicle's roof due to **additional fitting kit options**.

The 'Mallard' supports **2x2 MiMo from 698MHz to 6GHz** with a minimum **4dBi gain** across the whole band. With the additional functionality of **4x4 MiMo 2.4/5.8GHz Wi-Fi function**, **2x GPS/GNSS Ports**, and **TETRA**, this antenna would be an ideal solution for future proofing your new vehicle installations for **ESN**.

With a single hole installation and a **wide frequency bandwidth** on offer, this antenna would help **reduce installation costs** and protect your vehicles resale value. For **other available cable options**, please contact us.

Also Available in White: Part No. SK0200350



Part No.	Cable Kit Options
SK0200180	Product Kit : Black 4 in 1 Mallard Antenna & 5m Coax Ext Cable Kit : Terminated Cables
SK020401	Product Kit : Black 4 in 1 Mallard Antenna & 5m Coax Ext Cable Kit : CM Specialist : Terminated Cables

Additional options available upon request.

www.sure-antennas.com

A brand of



A MEMBER OF



MOBILE RADIO

SK0200290 'Mallard' 4-in-1 Antenna Black incl. 5m Coax Cables - TETRA



Technical Specifications

Part No.	SK0200290	
Electrical Data	TETRA	Wi-Fi
Frequency Range (MHz)	380 - 430 MHz	2.4 GHz & 5.8GHz
Band	TETRA	2x2 MiMo Dual Band Wi-Fi
VSWR	<2.1:1 TYPICALLY 1.5:1	<2.1:1 TYPICALLY 1.5:1
Gain	5dBi	Minimum 4dBi
Isolation	-	<-25dB
Polarisation	Vertical	Vertical
Pattern	Omni-directional	Omni-directional
Impedance	50Ω	50Ω
Max Power Input (W)	25W	10W
GPS/GLONASS		
Frequency Range (MHz)	1562-1612	
VSWR	<2:1	
Gain	26dB	
Polarisation	Right Hand Circular	
Operating Voltage	3-5v DC (fed via coax)	
Cable	2x 230mm RG316 Terminated to SMA (m)	
Mechanical Data		
Dimensions (mm)	H80xW70xL230 *	
Operating Temp (°C)	-40 / +80°C (-40° / 176°F)	
Material	ABS/PC	
Colour	Black	
Weight (g)	310	
Ingress Protection	IP66	
Cable Data		
Cable Type	RG316	RG316
length	280mm	200mm
Diameter	2.8	2.8
Termination	TNC (f)	SMA (m) Reverse Polarity
Mounting Data		
Mounting Type	Panel mount	
Mounting Hole (mm)	15mm	
Max Panel Thickness (mm)	10mm	

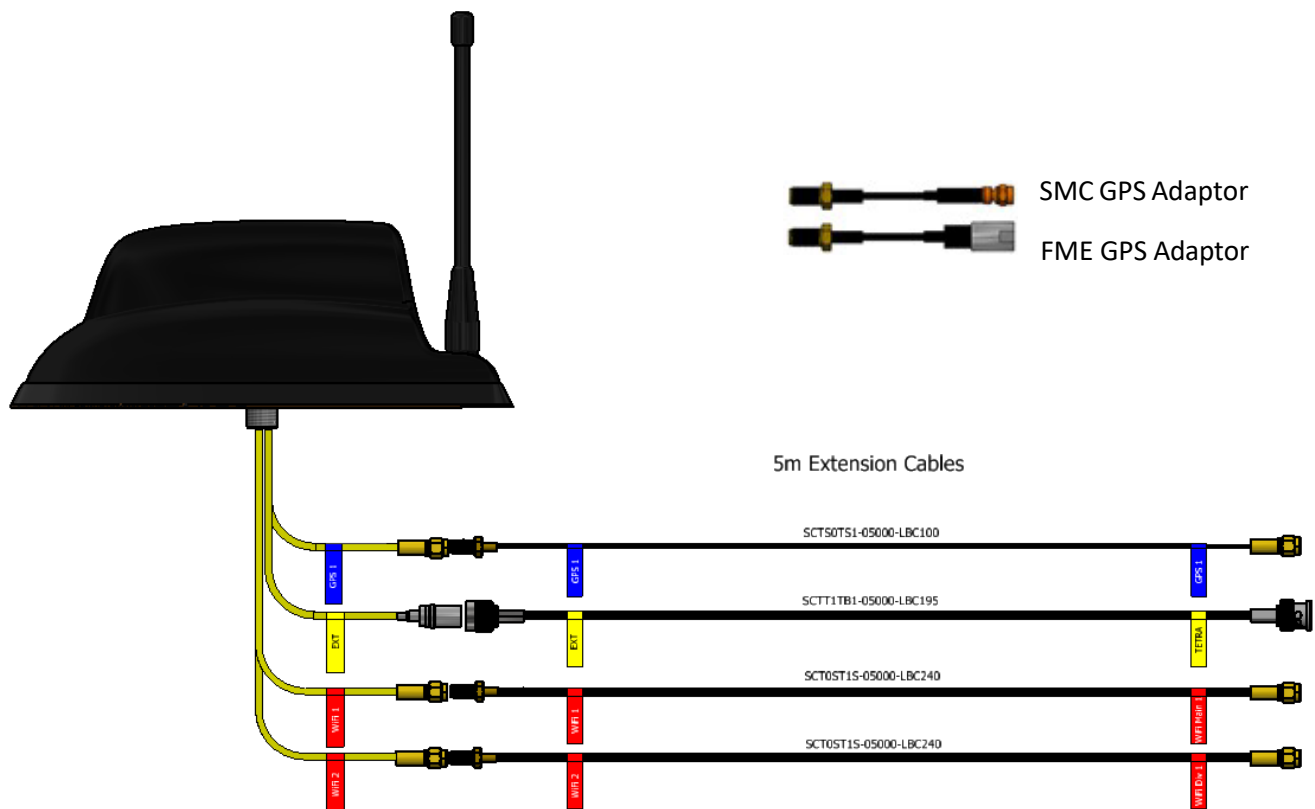
Subject to change without prior notice. *Excluding external antenna

SK0200290 'Mallard' 4-in-1 Antenna Black incl. 5m Coax Cables - TETRA

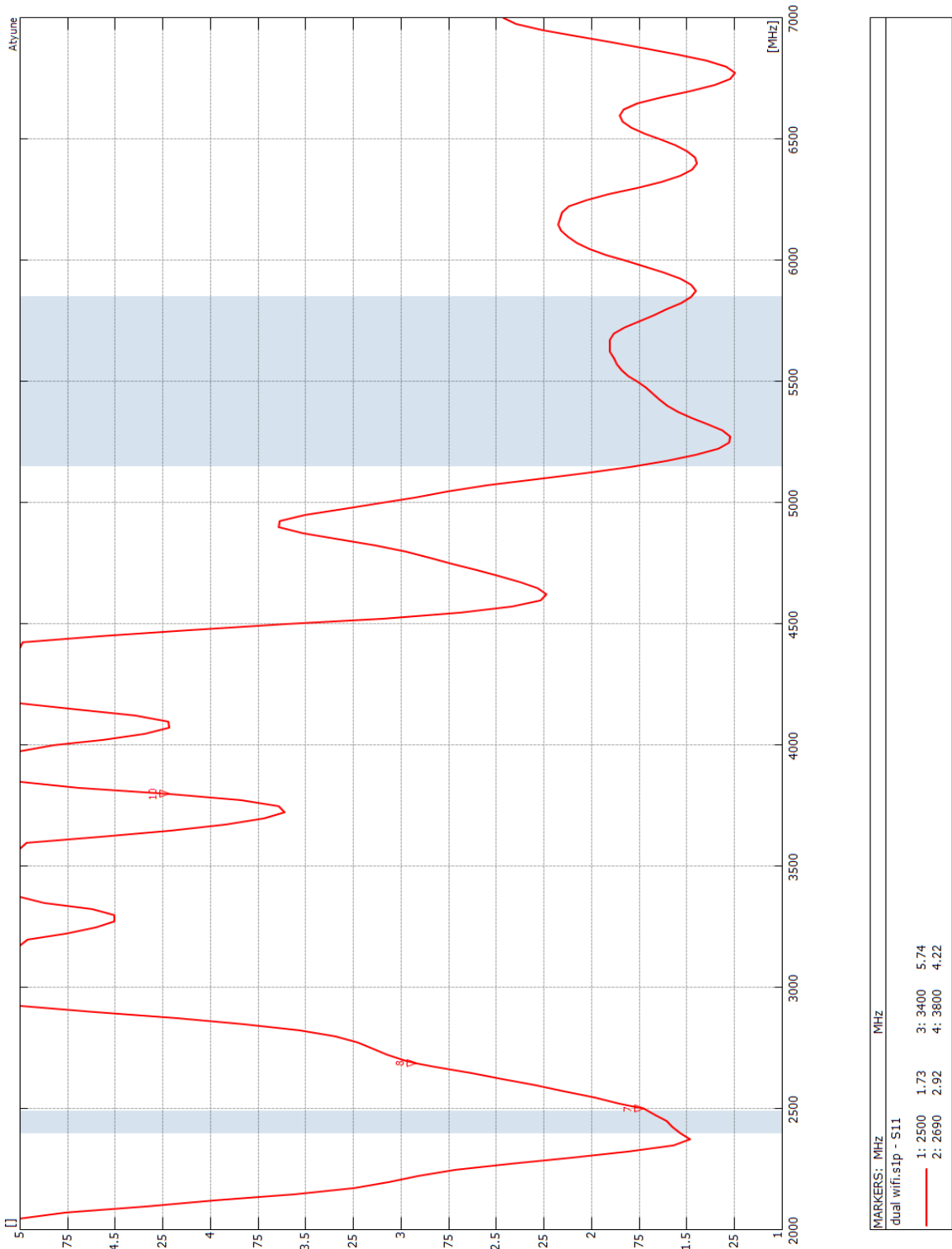
Supplied Coax Extension Cables

Coax Cables	2x Wi-Fi	1x TETRA	1x GPS
Cable Type	SBC240	SBC195	SBC100
length	5m or 3m	5m or 3m	5m or 3m
Diameter (mm)	6.1	4.95	2.8
Min. Bend Radius (mm)	30	25	14
Operating Temp. °C	-40-80	-40-80	-40-80
Termination	SMA Reverse Polarity (m)	BNC (m)	SMA (m) – Motorola and Sepura adaptors supplied.
Labeling	Wi-Fi M & Wi-Fi A	TETRA	GPS TETRA

Cable Diagram

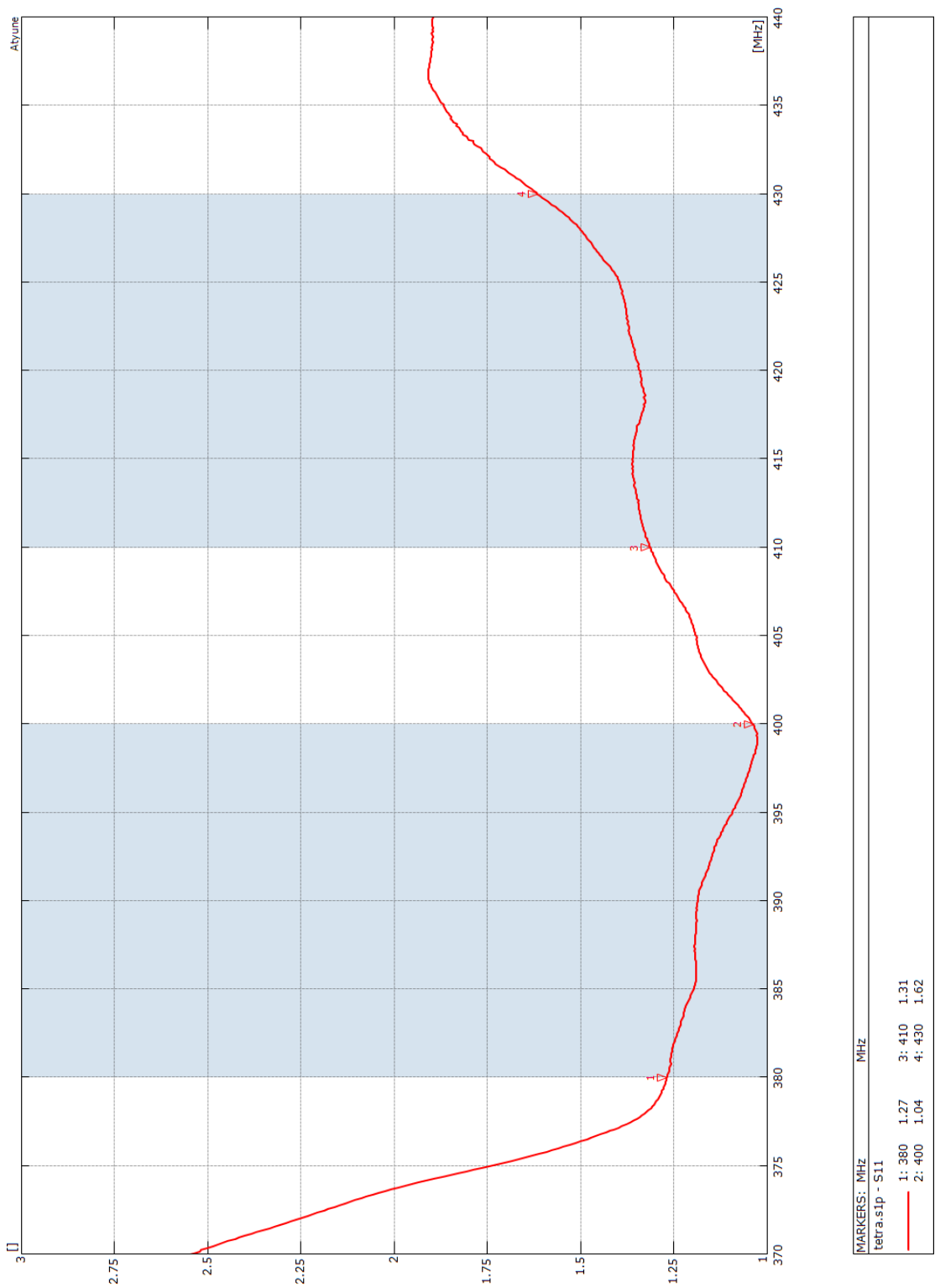


Wi-Fi VSWR Plot



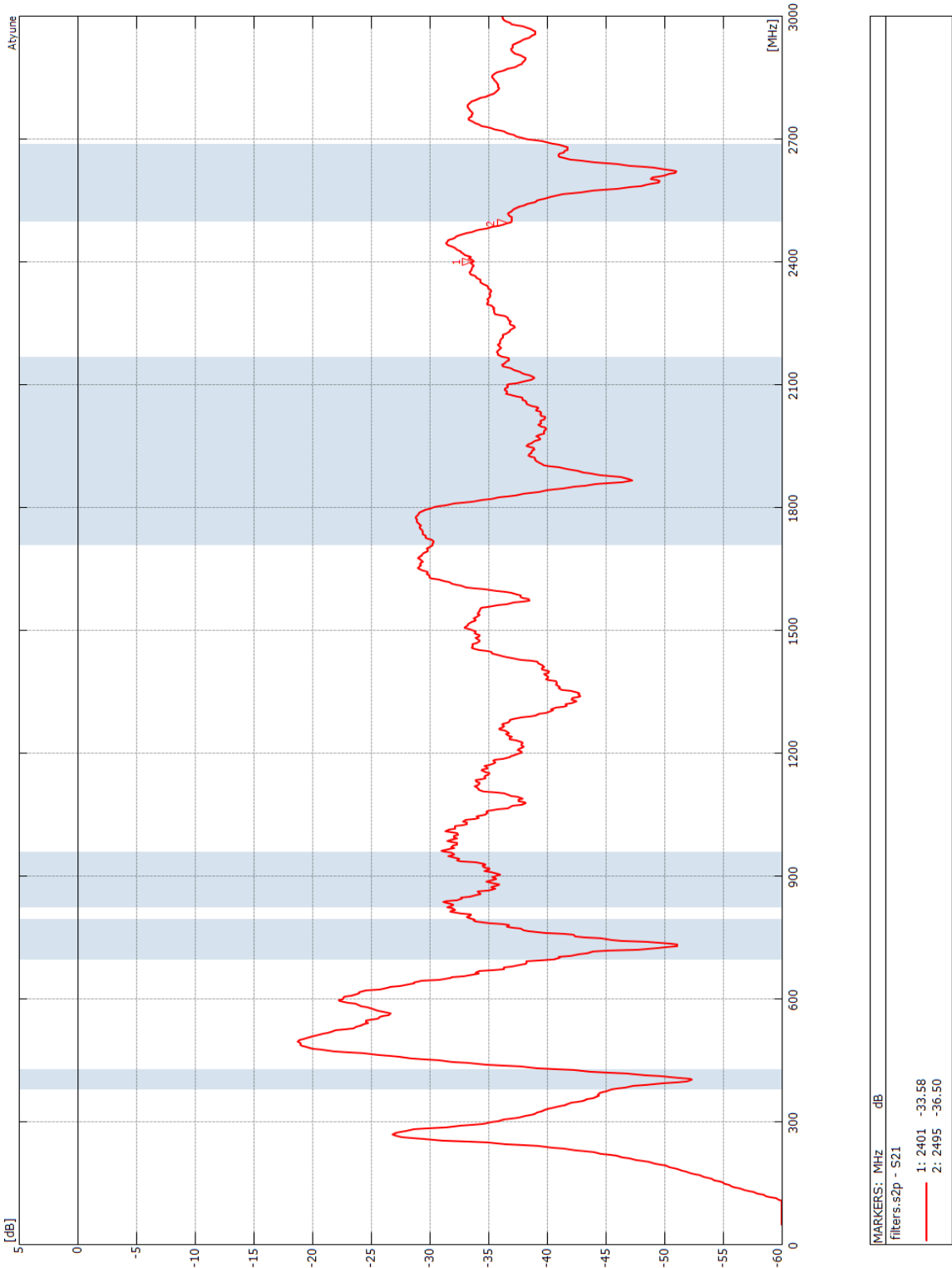
Subject to change without prior notice.

TETRA VSWR Plot



Subject to change without prior notice.

TETRA Isolation



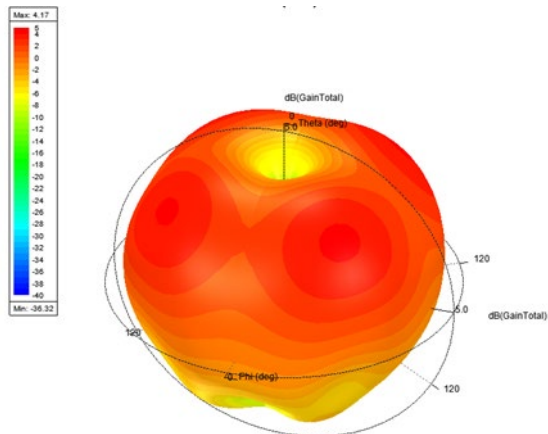
Subject to change without prior notice.

SK0200290 'Mallard' 4-in-1 Antenna Black incl. 5m Coax Cables - TETRA

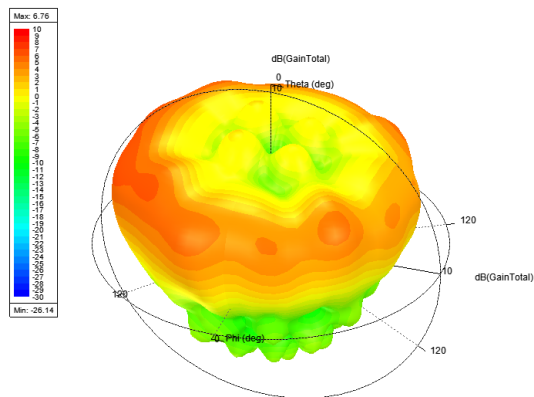


Antenna 3D Gain Plots

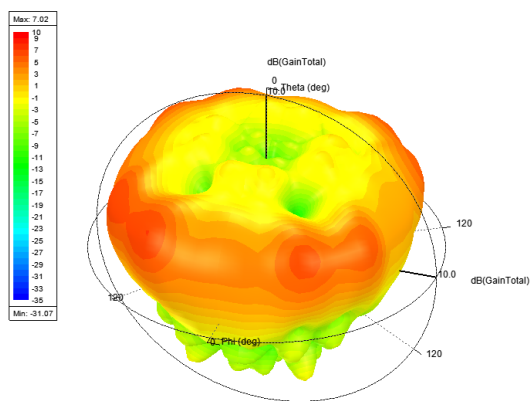
820MHz



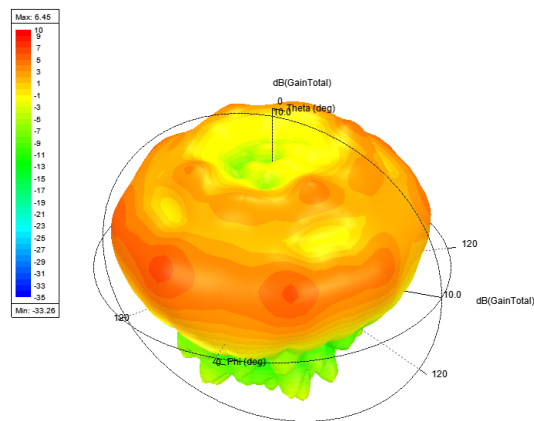
1820MHz



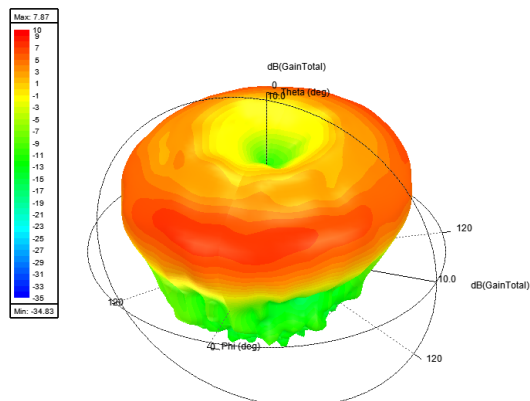
2140MHz



2600MHz



3600MHz



Subject to change without prior notice.

Sure Antennas. 6 Woodway Court, Thursby Rd, Bromborough, Merseyside CH62 3PR, United Kingdom
Schiphol Airport Tetra, Transpolis Park, Siriusdreef 17-27, 2132 WT Hoofddorp, Netherlands

T. +44 (0)151 334 9160 | E. sales@sure-antennas.com

www.sure-antennas.com

A brand of



MOBILE RADIO