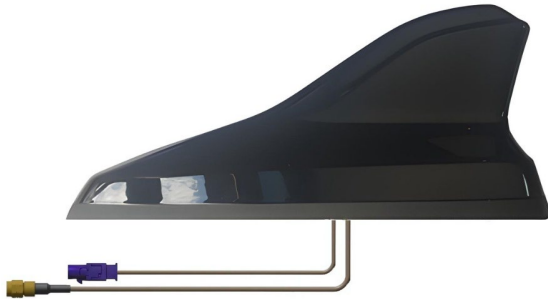
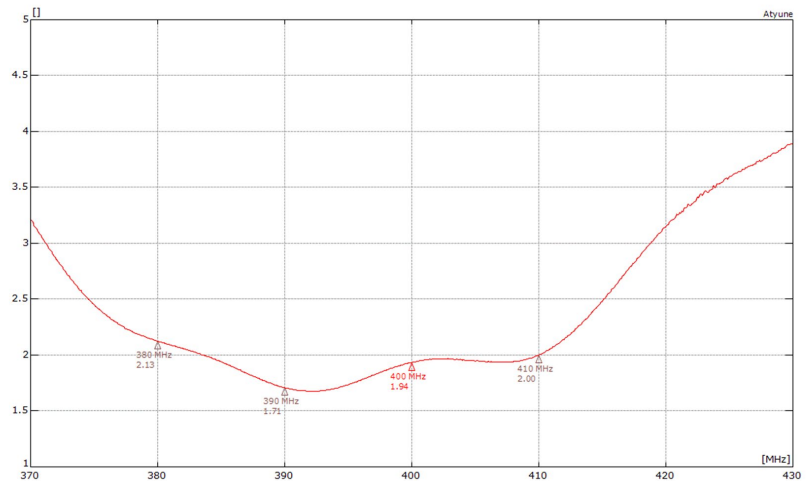


## Supply & Modify Large VW Skoda Cupra Antenna – 2 FUNCTIONS



VSWR\*



This covert antenna is a genuine modified **OEM shark fin** designed for **Skoda** vehicles, including **any vehicle in the VW group**. It comes pre-painted to **match the vehicle's specific colour code**. After painting, each antenna undergoes **individual testing** to ensure the paint finish does not interfere with frequency performance. The antenna features a single **300mm RG316 low-loss cable** and is available with **various additional functions and frequencies**, including **LTE** and **Wi-Fi**. Please contact us for more information.

### Technical Specifications\*

Band	TETRA	GPS	OEM Functions
Frequency Range (MHz)	380 - 410 MHz	1575 - 1609 MHz	All OEM functions & connectors retained.
Input Power	10W	LNA Specification: GPS, QZSS, GLONASS, BeiDou, Galileo	
Gain	-4.8dBi	27dB	
Polarisation	Vertical	RHCP	
VSWR	< 2.5:1	-	
Impedance	50Ω		
Connection	SMA (m)	Blue Fakra (m)	
LNA Noise Figure	-	1.3dB	

\*Tested using 5m of SBC-195 on 1.5m ground plane. Gain calculated using HFSS.

Sure Antennas. 6 Woodway Court, Thursby Rd, Bromborough, Merseyside CH62 3PR, United Kingdom  
Schiphol Airport Tetra – Siriusdreef 17-27, Transpolis Park, 2132 WT Hoofddorp, Netherlands

T. +44 (0)151 363 7377 | E. [sales@sure-antennas.com](mailto:sales@sure-antennas.com)

A brand of



[www.sure-antennas.com](http://www.sure-antennas.com)