

5 YEARS WARRANTY



The 'Sandcastle' is a low-profile, multifunction antenna designed for blue-light and amber-light vehicle fleets, combining up to 18 functions within a single panel-mounted unit. With optional fitting kits, the 'Sandcastle' can be installed using the existing OEM mounting hole, preventing the need to drill additional holes and maintaining OEM functions.

This variant supports **9 Functions** including **4x LTE, 4x WiFi and 1 GPS**

The Sandcastle portfolio includes variants that are **ESN-ready** and fully compatible with **current Airwave system**, making it ideal for future proofing your fleet for the upcoming transition to LTE.

Also Available in White: Part No. 8000-209



| Part No. | Cable Kit Options |
|-----------|--|
| SK0200626 | Product Kit : Sandcastle 9 in 1 Antenna : Black : 4x LTE 1x GPS 4x Wi-Fi; - Complete with 7m Coax Extension Cables - Terminated |

Additional options available upon request.

Technical Specifications

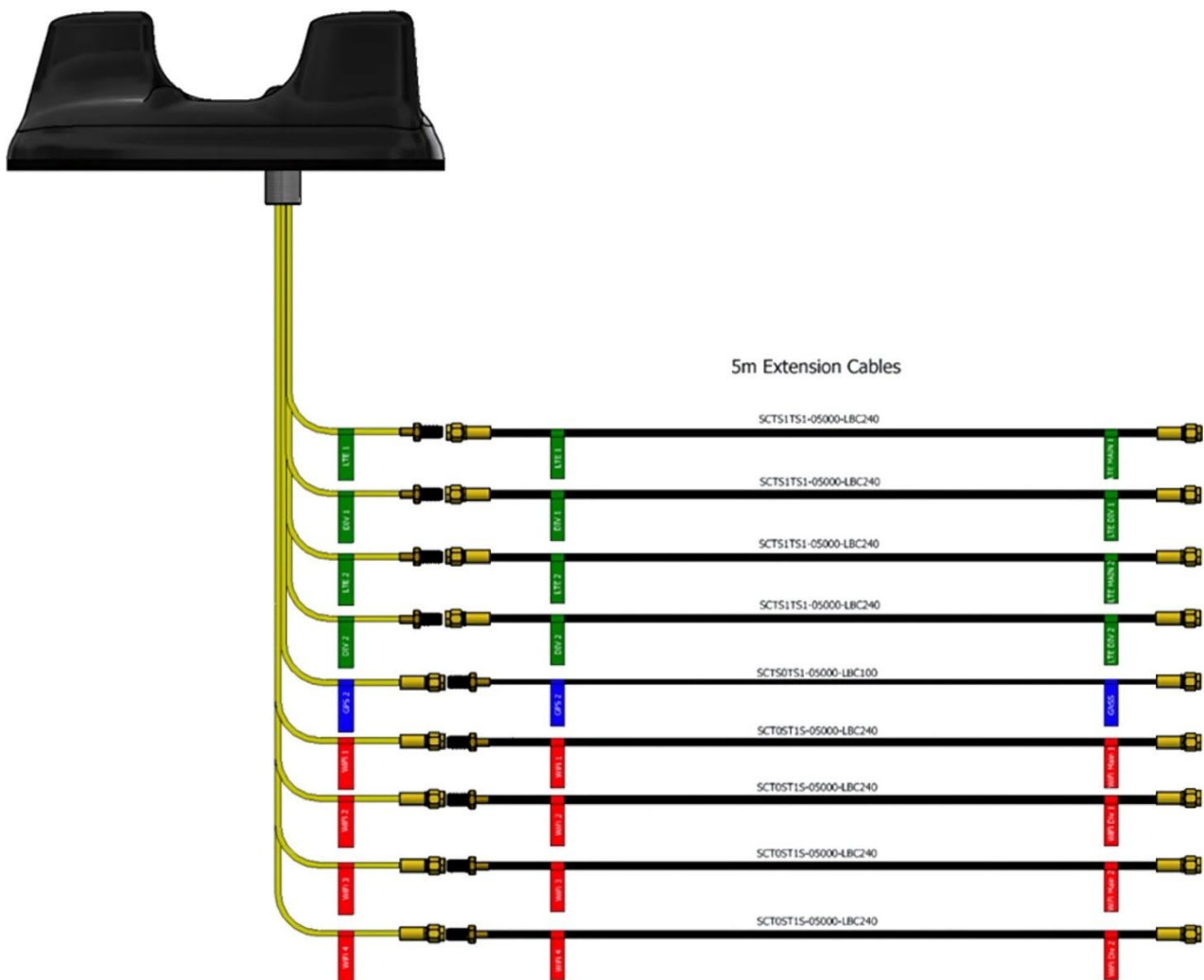
| Part No. | 8000-309 | |
|------------------------|--|-----------------------------|
| Electrical Data | | |
| | 2G 3G 4G 5G | Wi-Fi |
| Frequency Range (MHz) | 698-6000 MHz | 2.4 GHz & 5.8GHz |
| Band | 4x Wideband LTE 4x4 MiMo | 4x Dual Band Wi-Fi 4x4 MiMo |
| VSWR | <2.1:1 TYPICALLY 1.5:1 | <2.1:1 TYPICALLY 1.5:1 |
| Gain | Minimum 4dBi | Minimum 4dBi |
| Isolation | <-25dB | <-25dB |
| Polarisation | Vertical | Vertical |
| Pattern | Omni-directional | Omni-directional |
| Impedance | 50Ω | 50Ω |
| Max Power Input (W) | 10W | 10W |
| GPS/GLONASS | | |
| Frequency Range (MHz) | 1562-1612 | |
| VSWR | <2:1 | |
| Gain | 26dB | |
| Polarisation | Right Hand Circular | |
| Operating Voltage | 3-5v DC (fed via coax, each port is DC isolated) | |
| Cable | 2x RG316 Terminated to SMA (m) | |
| Mechanical Data | | |
| Dimensions (mm) | H76xW197xL227 | |
| Operating Temp (°C) | -40 / +80°C (-40° / 176°F) | |
| Material | ABS | |
| Colour | Black | |
| Weight (g) | 600 | |
| Cable Data | | |
| Cable Type | RG316 | RG316 |
| length (mm) | 300 | 300 |
| Diameter | 2.8 | 2.8 |
| Termination | SMA (f) | SMA (m) Reverse Polarity |
| Mounting Data | | |
| Mounting Type | Panel mount with adhesive pad | |
| Mounting Hole (mm) | 19mm | |

Subject to change without prior notice.

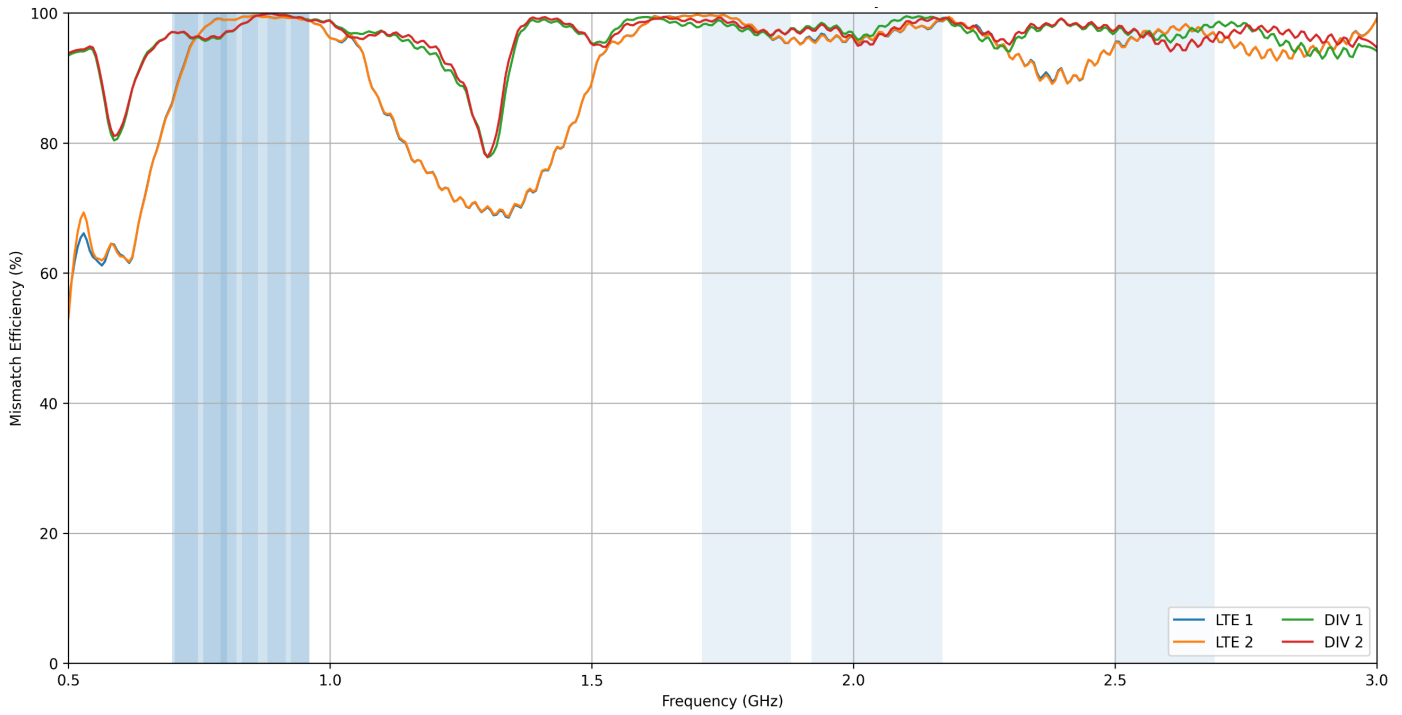
Supplied Coax Extension Cables

| Coax Cables | 4x LTE | 4x Wi-Fi | 1x GPS |
|-----------------------|---------------|--------------------------|----------|
| Cable Type | SBC240 | SBC240 | SBC100 |
| length | 5m or 3m | 5m or 3m | 5m or 3m |
| Diameter (mm) | 6.1 | 6.1 | 2.8 |
| Min. Bend Radius (mm) | 30 | 30 | 14 |
| Operating Temp. °C | -40-80 | -40-80 | -40-80 |
| Termination | SMA (m) | SMA Reverse Polarity (m) | |
| Labeling | LTE M & LTE A | Wi-Fi M & Wi-Fi A | GPS |

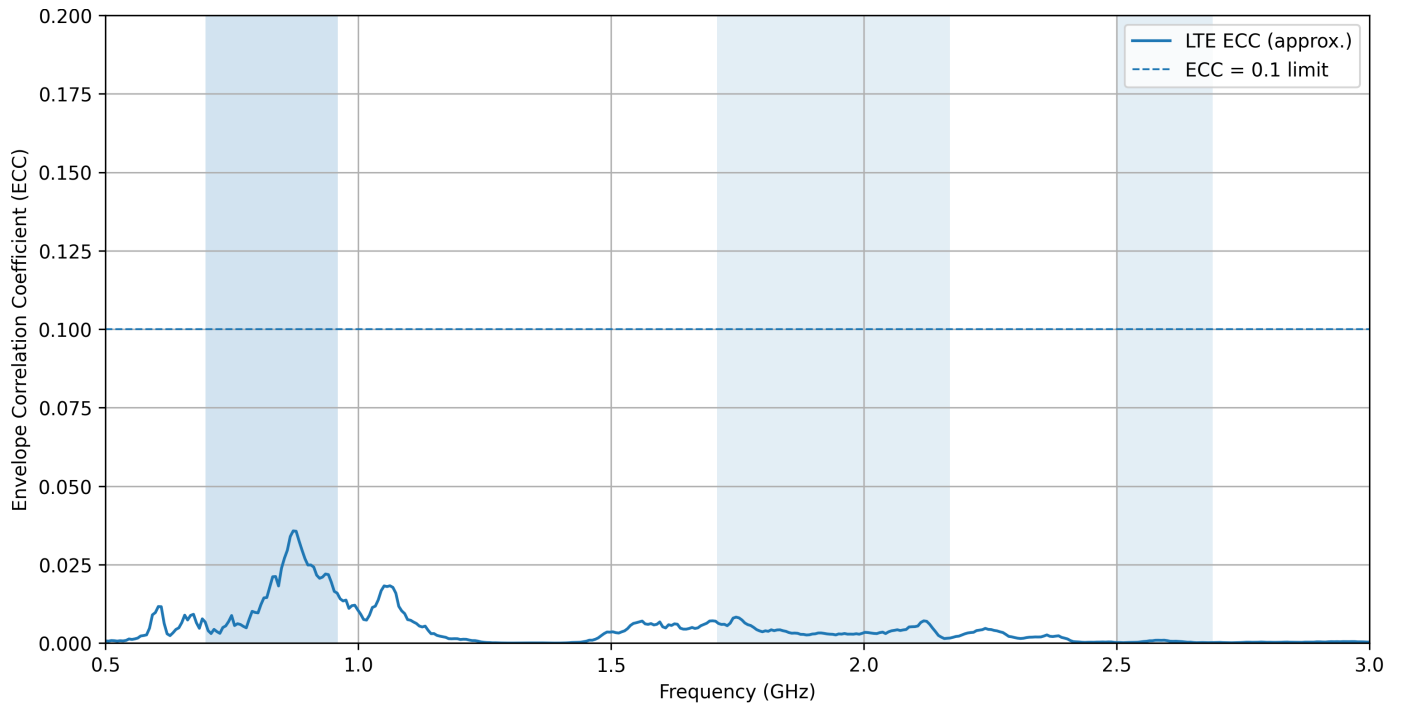
Cable Diagram



LTE / DIV Ports - Mismatch Efficiency

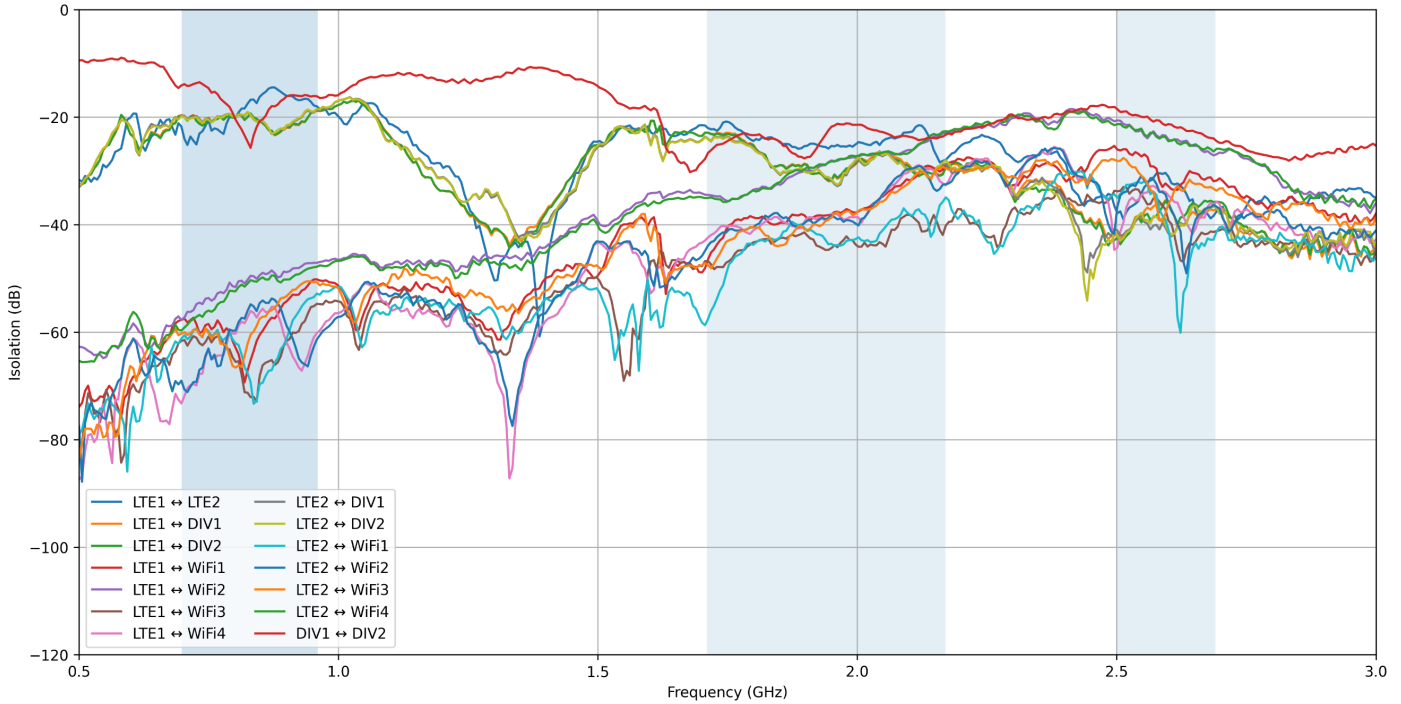


LTE ECC (Cut at 3 GHz)

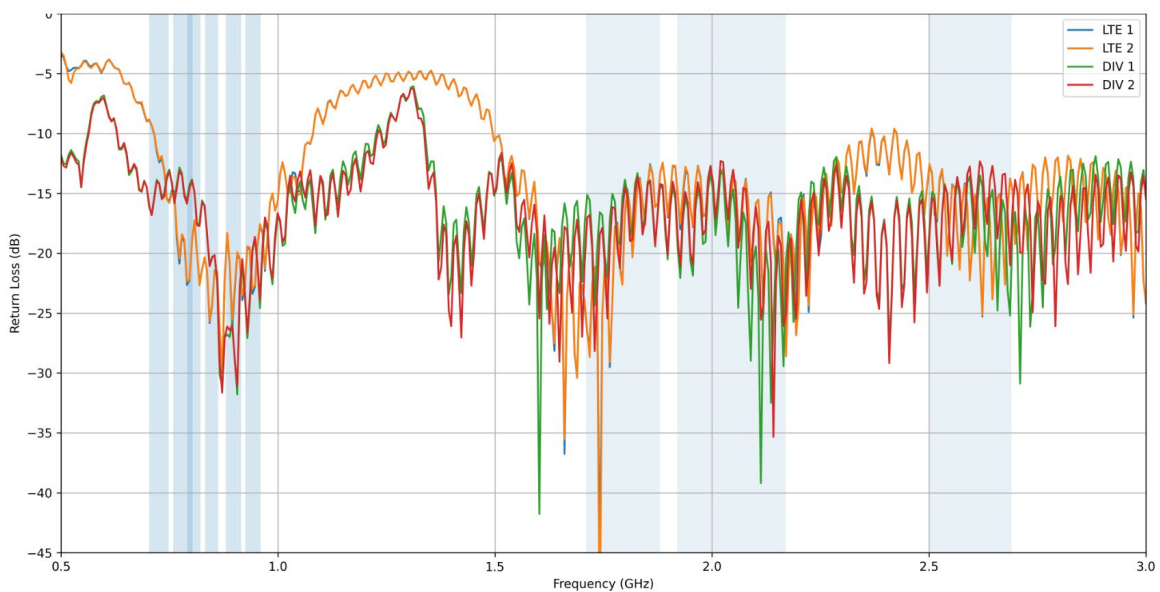


Subject to change without prior notice.

LTE Port Isolation (Cut at 3 GHz)

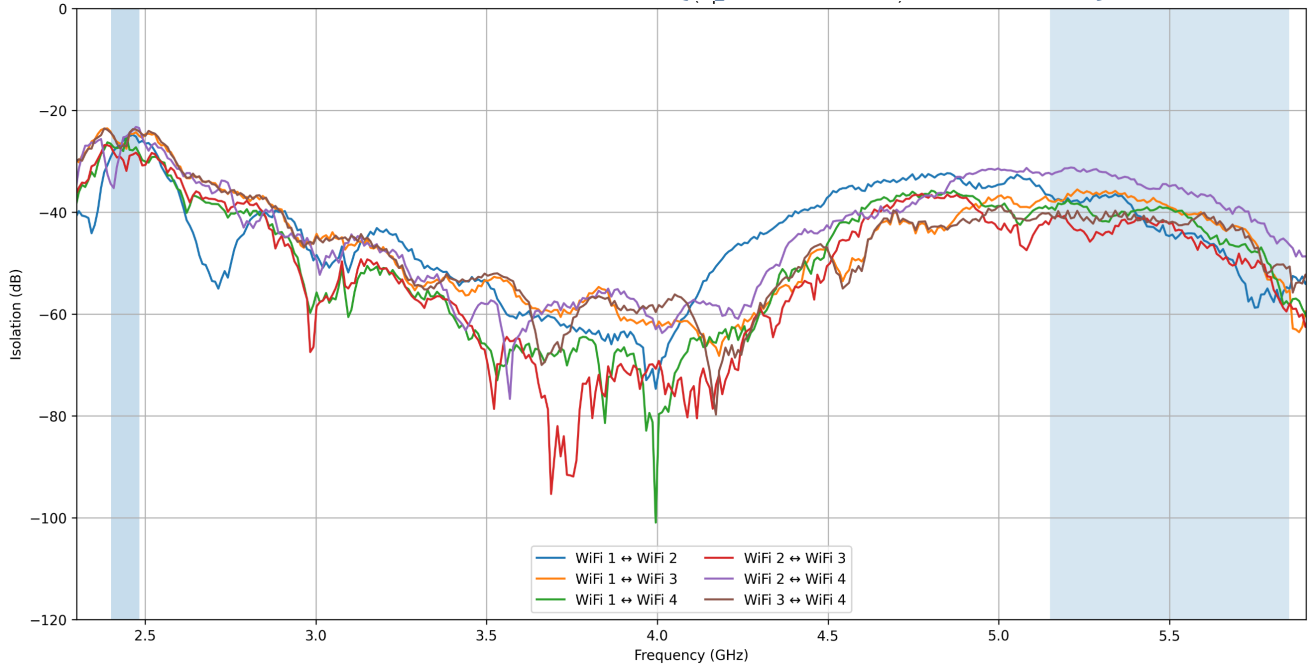


LTE Return Loss

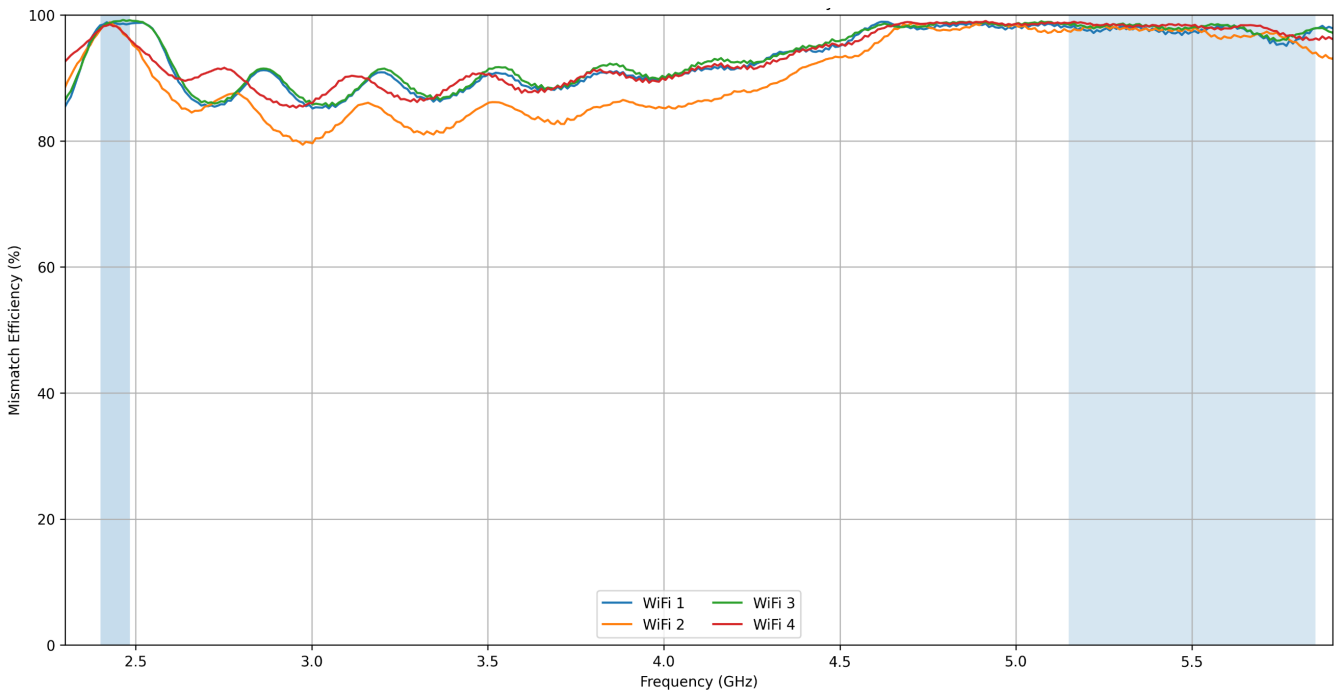


Subject to change without prior notice.

WiFi Port-to-Port Isolation (Updated Measurements)

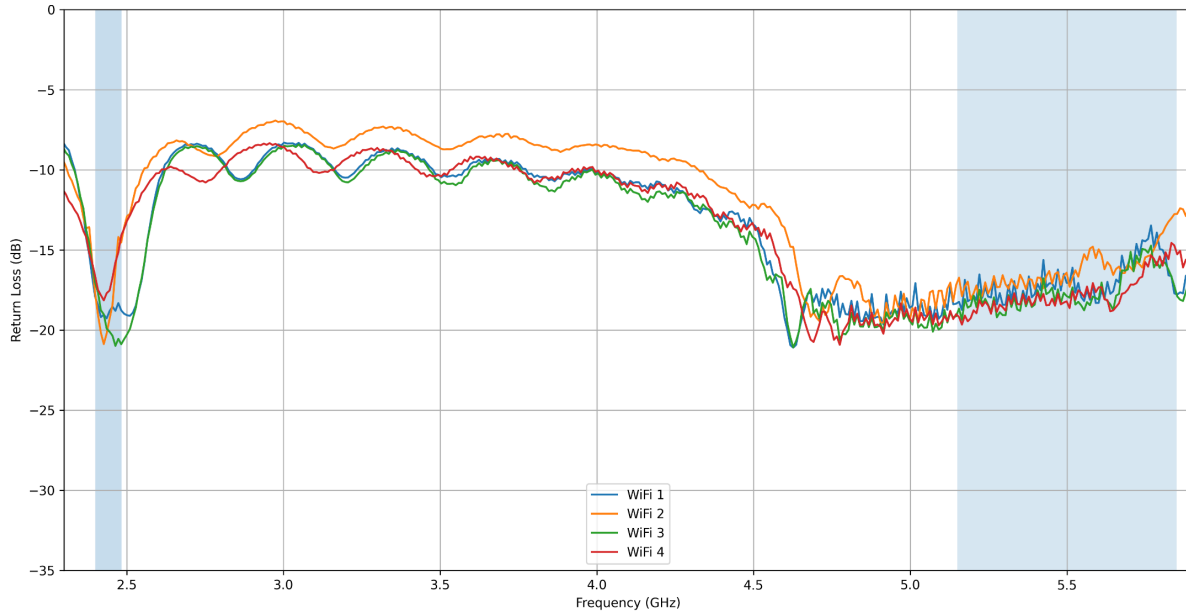


WiFi Ports - Mismatch Efficiency



Subject to change without prior notice.

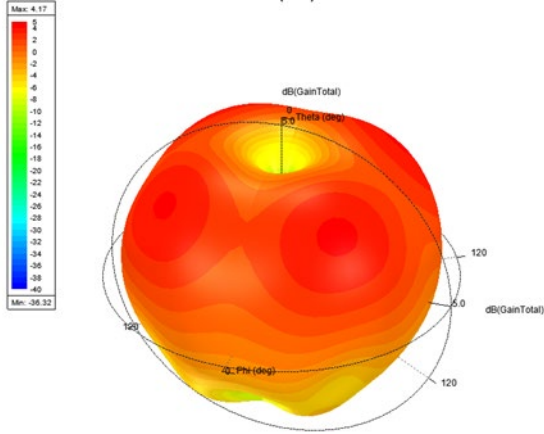
WiFi Antenna - Dual-Band Return Loss



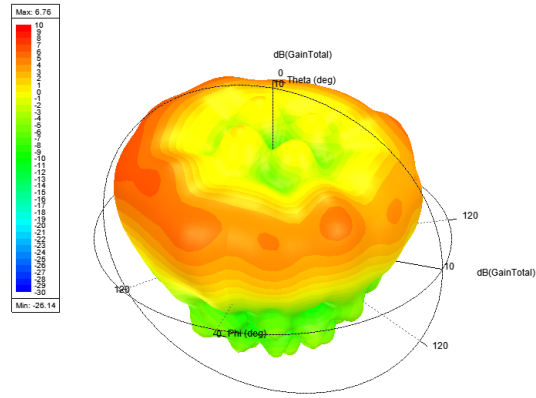
Subject to change without prior notice.

3D Radiation Pattern

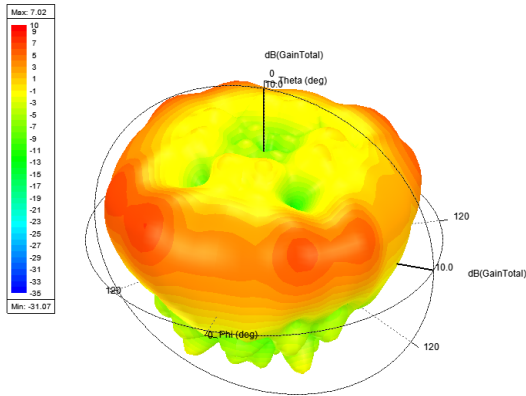
820MHz



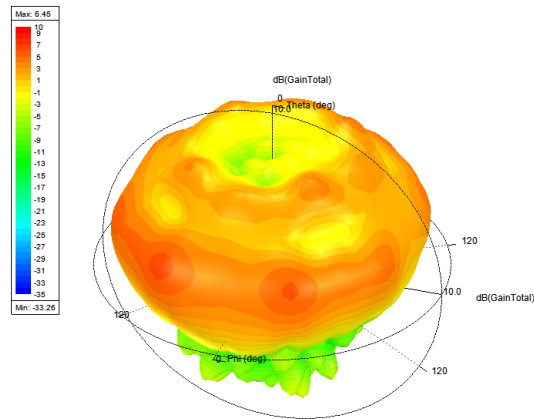
1820MHz



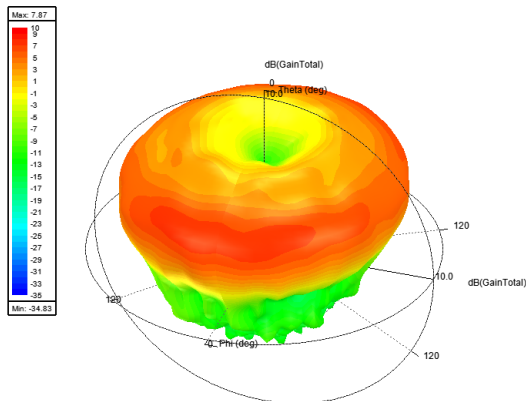
2140MHz



2600MHz



3600MHz



Subject to change without prior notice.

Sure Antennas. 6 Woodway Court, Thursby Rd, Bromborough, Merseyside CH62 3PR, United Kingdom
Schiphol Airport Tetra, Transpolis Park, Siriusdreef 17-27, 2132 WT Hoofddorp, Netherlands

T. +44 (0)151 363 7377 | E. sales@sure-antennas.com



www.sure-antennas.com