

**5 YEARS WARRANTY**



The 'Sandcastle' is a low-profile, multifunction antenna designed for blue-light and amber-light vehicle fleets, combining up to 18 functions within a single panel-mounted unit. With optional fitting kits, the 'Sandcastle' can be installed using the existing OEM mounting hole, preventing the need to drill additional holes and maintaining OEM functions.

This variant supports **11 Functions** including **4x LTE, 6x WiFi and 1x GPS**

The Sandcastle portfolio includes variants that are **ESN-ready** and fully compatible with **current Airwave system**, making it ideal for future proofing your fleet for the upcoming transition to LTE.

**Also Available in White: Part No. 8000-213**



Part No.

SK024701

Cable Kit Options

Product Kit : Sandcastle 11 in 1 Antenna : Black : 4x LTE 1x GPS 6x WiFi; - Complete with 5m Coax Extension Cables - 6x Cables

Additional options available upon request.

## Technical Specifications

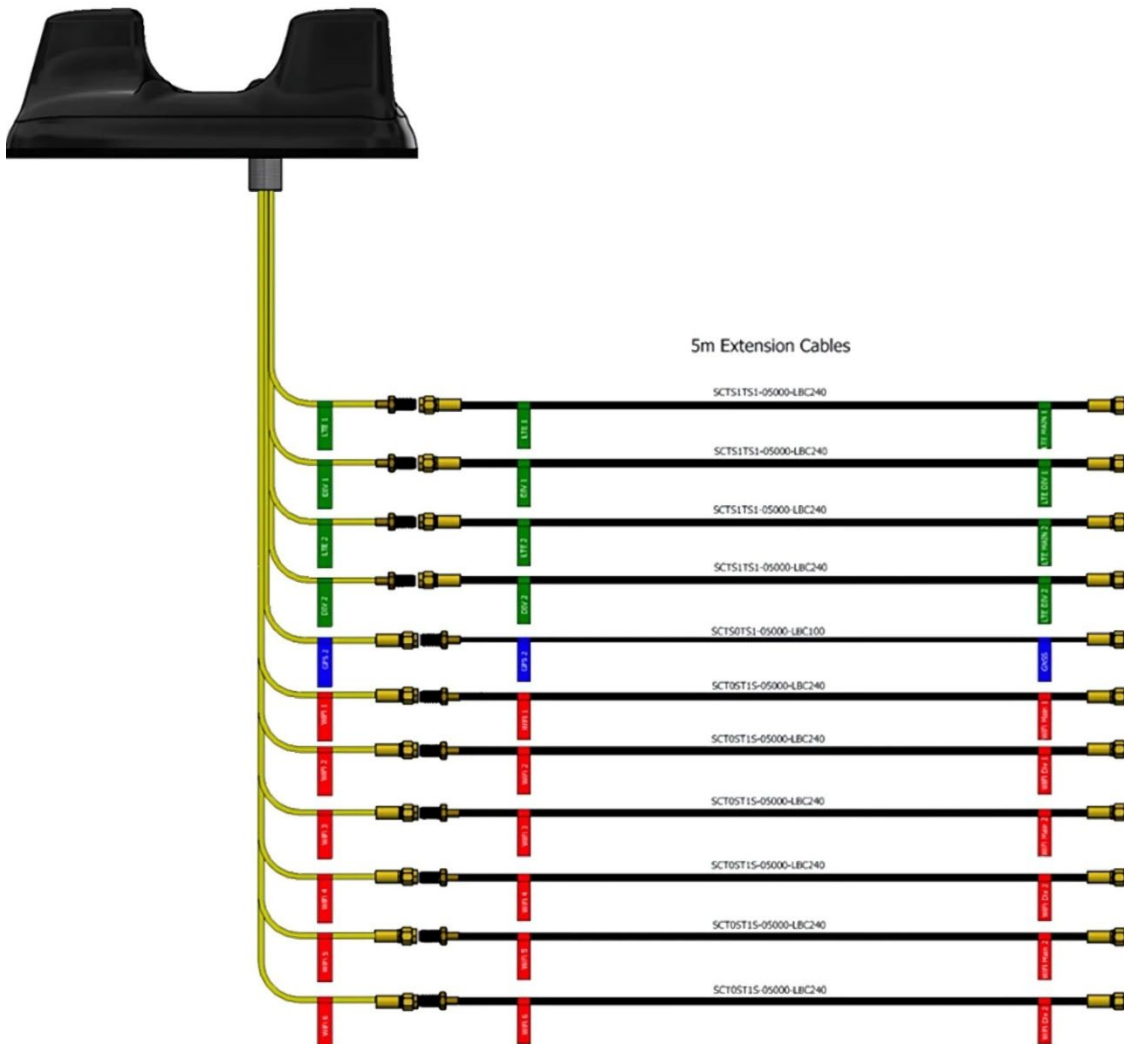
Part No.	8000-313	
<b>Electrical Data</b>		
	2G 3G 4G 5G	Wi-Fi
Frequency Range (MHz)	698-6000 MHz	2.4 GHz & 5.8GHz
Band	4x Wideband LTE 4x4 MiMo	4x Dual Band Wi-Fi 4x4 MiMo
VSWR	<2.1:1 TYPICALLY 1.5:1	<2.1:1 TYPICALLY 1.5:1
Gain	Minimum 4dBi	Minimum 4dBi
Isolation	<-25dB	<-25dB
Polarisation	Vertical	Vertical
Pattern	Omni-directional	Omni-directional
Impedance	50Ω	50Ω
Max Power Input (W)	10W	10W
<b>GPS/GLONASS</b>		
Frequency Range (MHz)	1562-1612	
VSWR	<2:1	
Gain	26dB	
Polarisation	Right Hand Circular	
Operating Voltage	3-5v DC (fed via coax, each port is DC isolated)	
Cable	2x RG316 Terminated to SMA (m)	
<b>Mechanical Data</b>		
Dimensions (mm)	H76xW197xL227	
Operating Temp (°C)	-40 / +80°C (-40° / 176°F)	
Material	ABS	
Colour	Black	
Weight (g)	600	
<b>Cable Data</b>		
Cable Type	RG316	RG316
length (mm)	300	300
Diameter	2.8	2.8
Termination	SMA (f)	SMA (m) Reverse Polarity
<b>Mounting Data</b>		
Mounting Type	Panel mount with adhesive pad	
Mounting Hole (mm)	19mm	

Subject to change without prior notice.

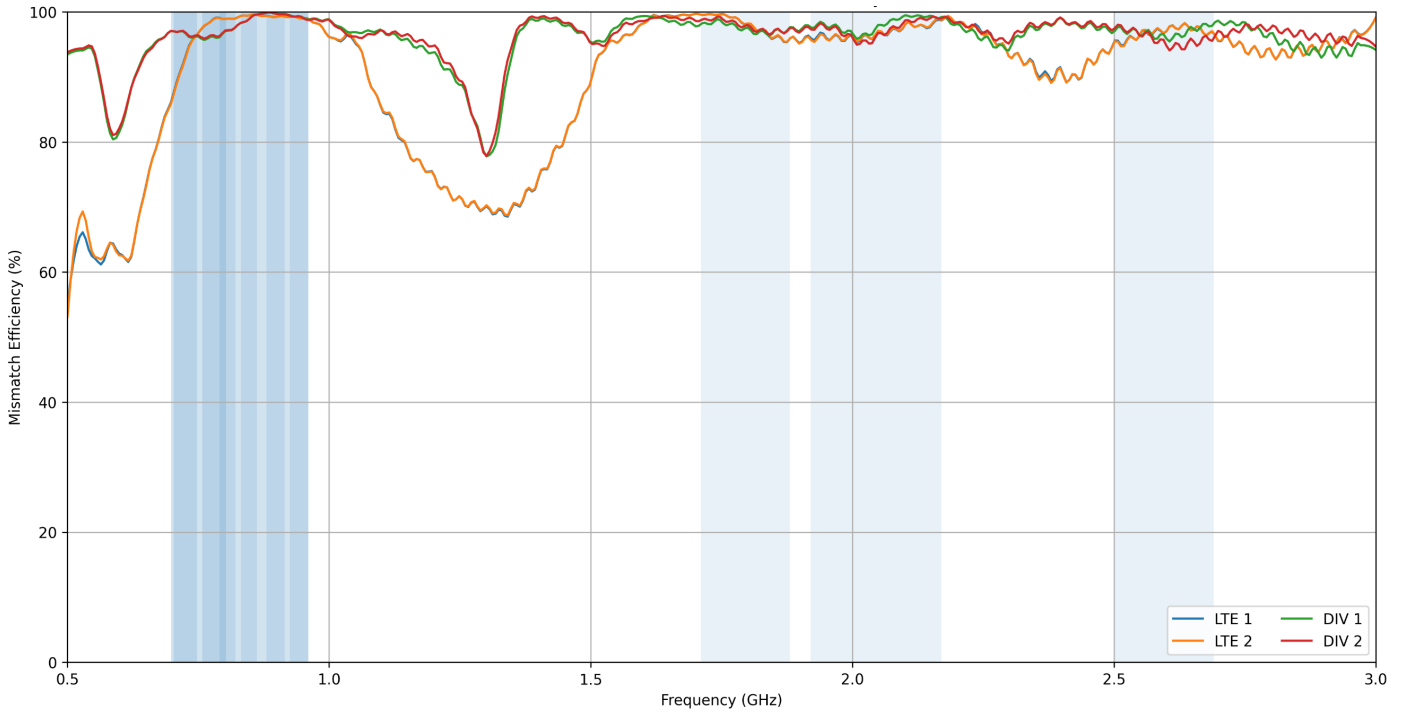
Supplied Coax Extension Cables

Coax Cables	4x LTE	6x Wi-Fi	1x GPS
Cable Type	SBC240	SBC240	SBC100
length	5m or 3m	5m or 3m	5m or 3m
Diameter (mm)	6.1	6.1	2.8
Min. Bend Radius (mm)	30	30	14
Operating Temp. °C	-40-80	-40-80	-40-80
Termination	SMA (m)	SMA Reverse Polarity (m)	SMA (m)
Labeling	LTE M & LTE A	WiFi M & WiFi A	GPS

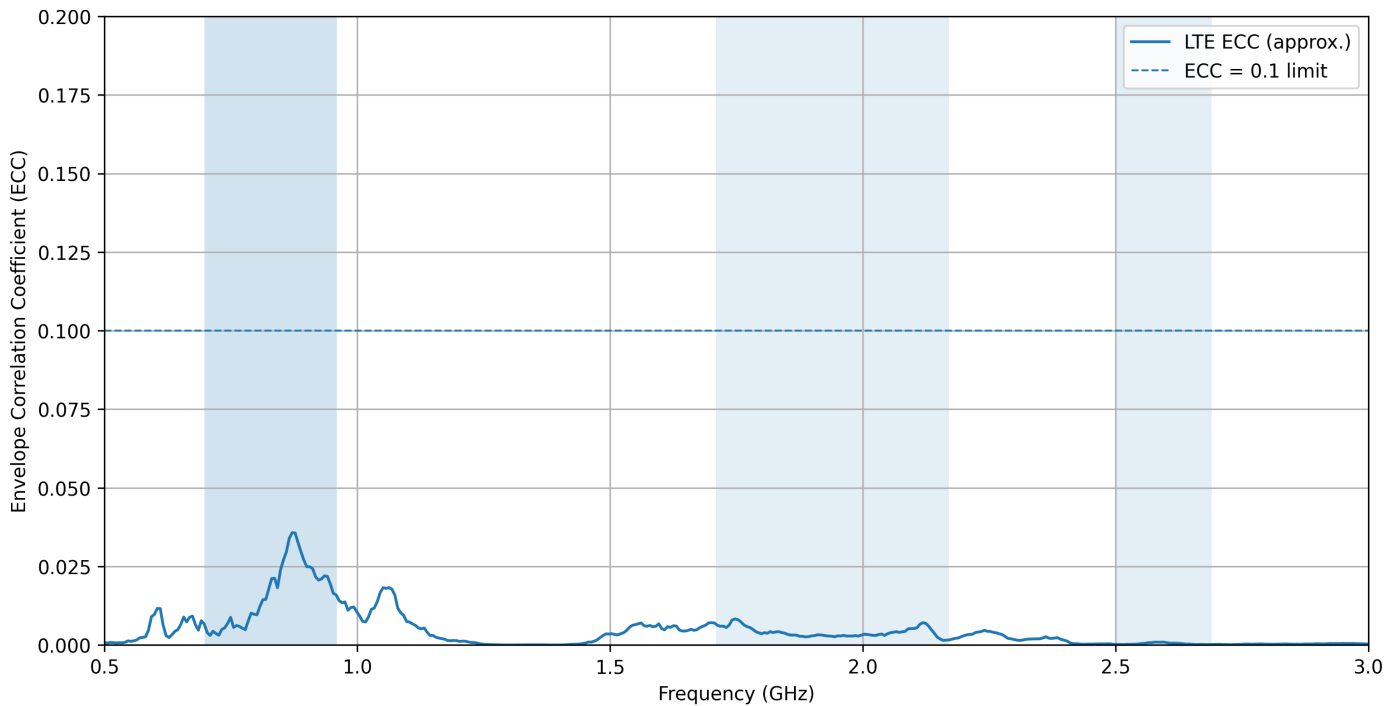
Cable Diagram



### LTE / DIV Ports - Mismatch Efficiency

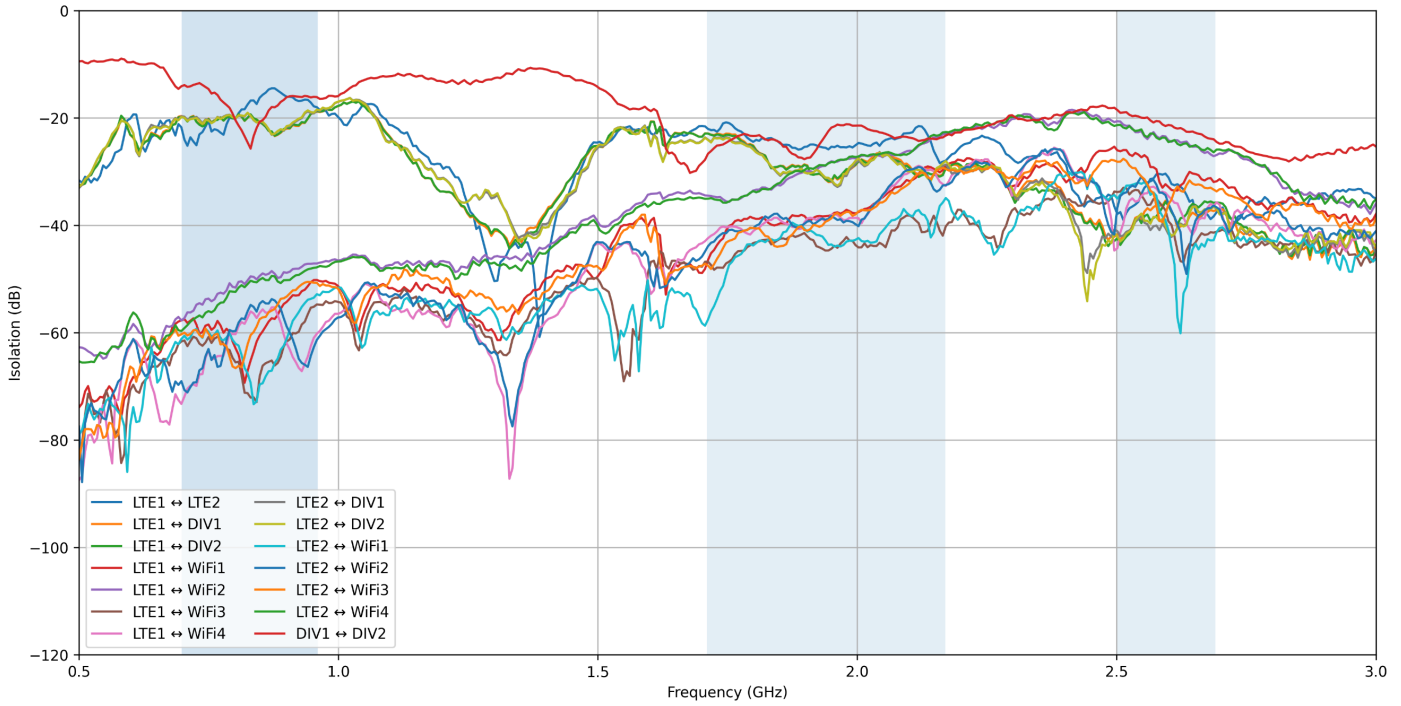


### LTE ECC (Cut at 3 GHz)

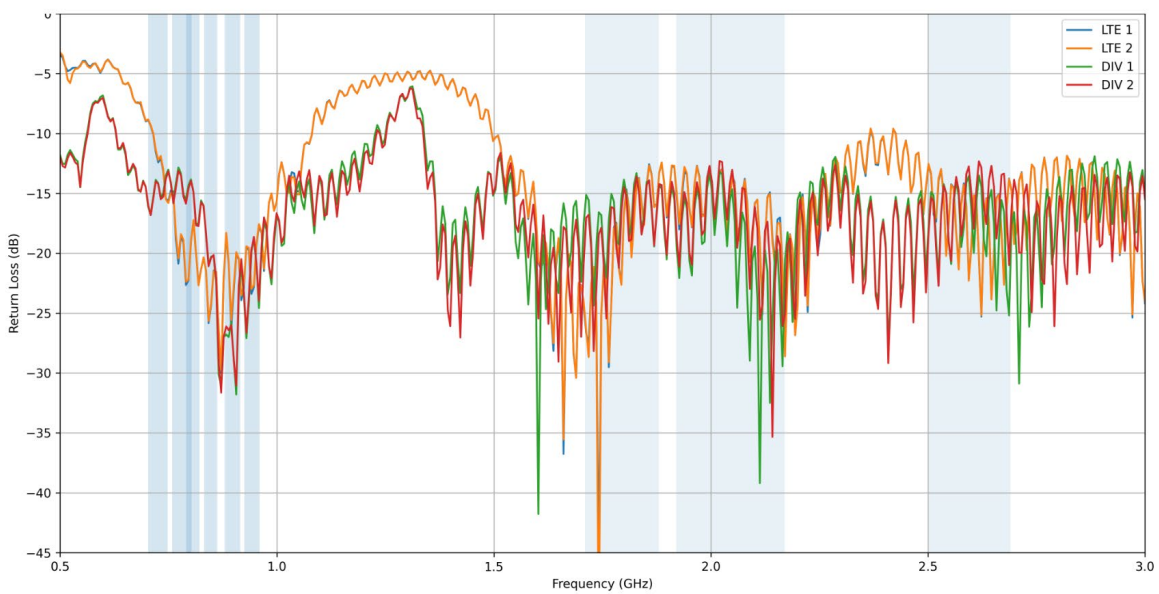


Subject to change without prior notice.

### LTE Port Isolation (Cut at 3 GHz)

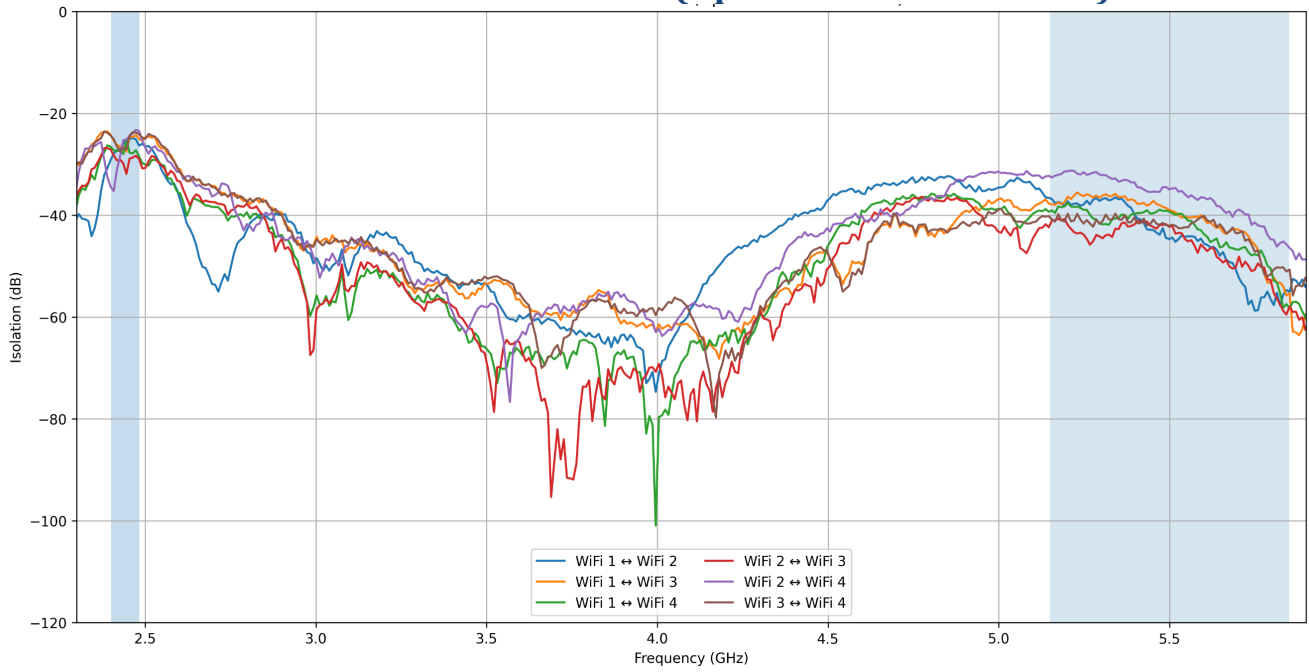


### LTE Return Loss

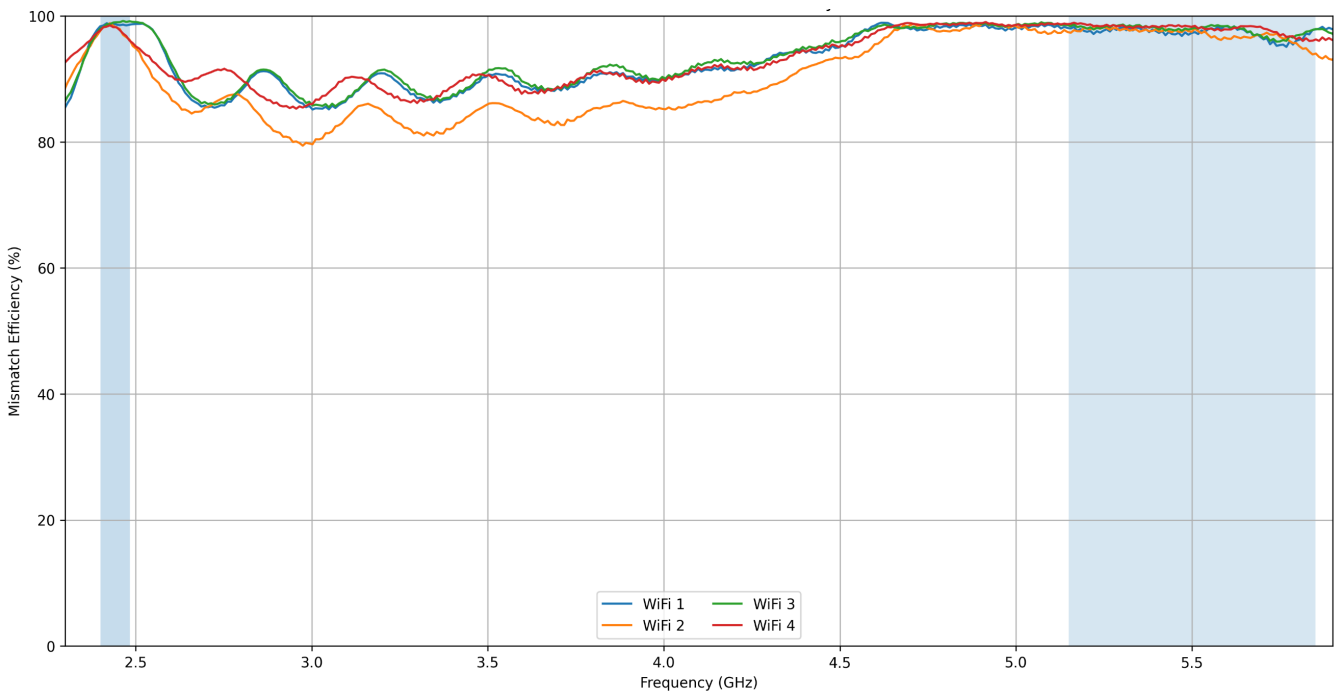


Subject to change without prior notice.

### WiFi Port-to-Port Isolation (Updated Measurements)

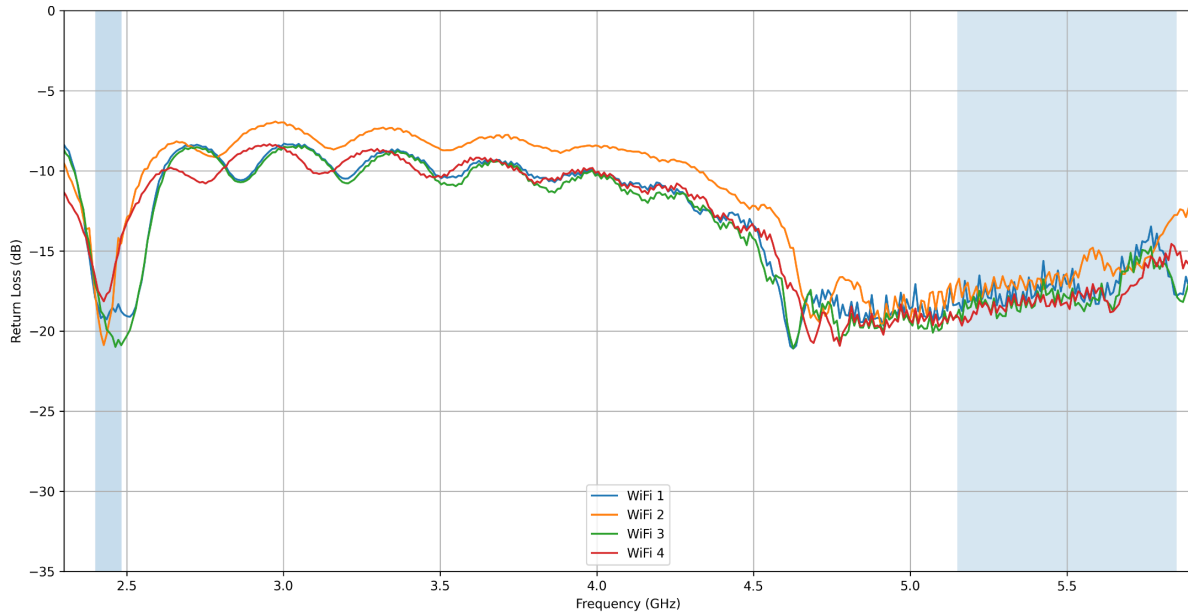


### WiFi Ports - Mismatch Efficiency



Subject to change without prior notice.

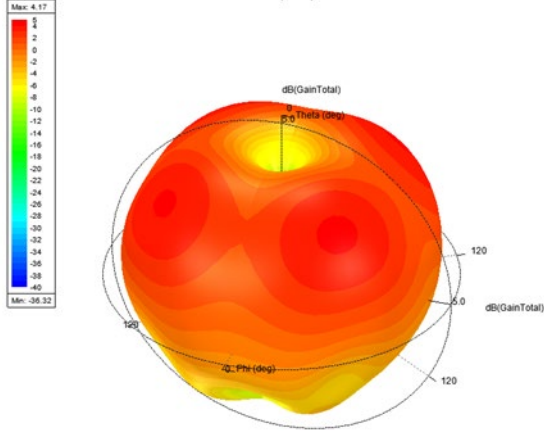
### WiFi Antenna - Dual-Band Return Loss



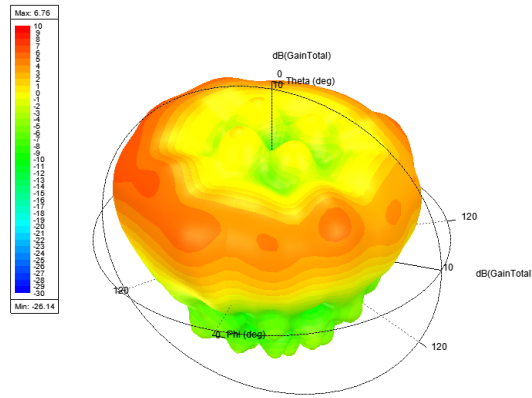
Subject to change without prior notice.

3D Radiation Pattern

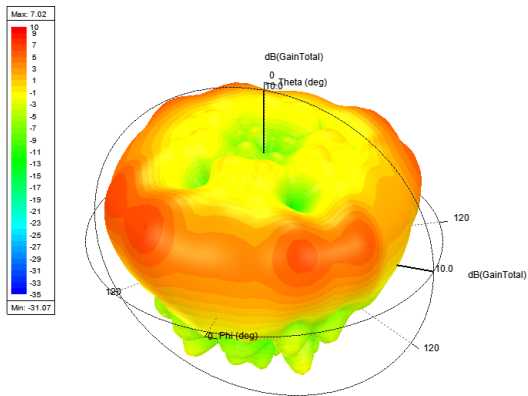
820Mhz



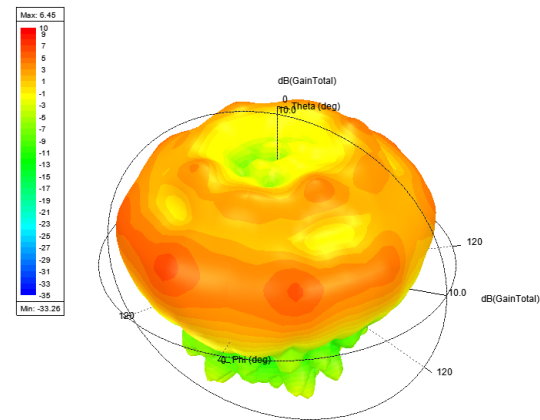
1820MHz



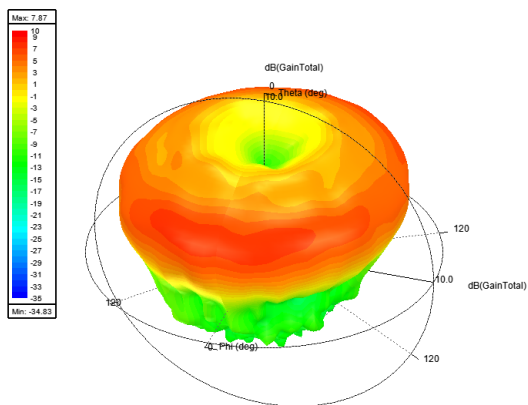
2140Mhz



2600Mhz



3600Mhz



Subject to change without prior notice.

Sure Antennas. 6 Woodway Court, Thursby Rd, Bromborough, Merseyside CH62 3PR, United Kingdom  
Schiphol Airport Tetra, Transpolis Park, Siriusdreef 17-27, 2132 WT Hoofddorp, Netherlands

T. +44 (0)151 363 7377 | E. [sales@sure-antennas.com](mailto:sales@sure-antennas.com)



[www.sure-antennas.com](http://www.sure-antennas.com)