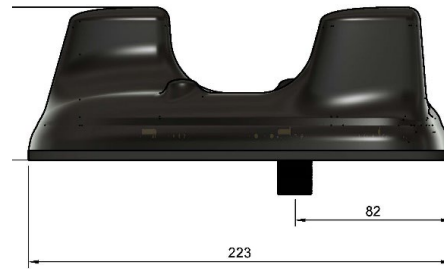


5 YEARS WARRANTY



The 'Sandcastle' is a low-profile, multifunction antenna designed for blue-light and amber-light vehicle fleets, combining up to 18 functions within a single panel-mounted unit. With optional fitting kits, the 'Sandcastle' can be installed using the existing OEM mounting hole, preventing the need to drill additional holes and maintaining OEM functions.

This variant supports **11 Functions** including **TETRA, 4x LTE, 4x WiFi and 2x GPS**

The Sandcastle portfolio includes variants that are **ESN-ready** and fully compatible with **current Airwave system**, making it ideal for future proofing your fleet for the upcoming transition to LTE.

Also Available in White: Part No. 8000-219



Part No.	Cable Kit Options
SK0200726	Product Kit : Sandcastle 11 in 1 Antenna : Black : 4x LTE 1x TETRA 2x GPS 4x WiFi; - Complete with 7m Coax Extension Cables - Terminated
SK0200722	Product Kit : Sandcastle 11 in 1 Antenna : Black : 4x LTE 1x TETRA 2x GPS 4x WiFi; - Complete with 3m Coax Extension Cables - Terminated

Additional options available upon request.

Technical Specifications

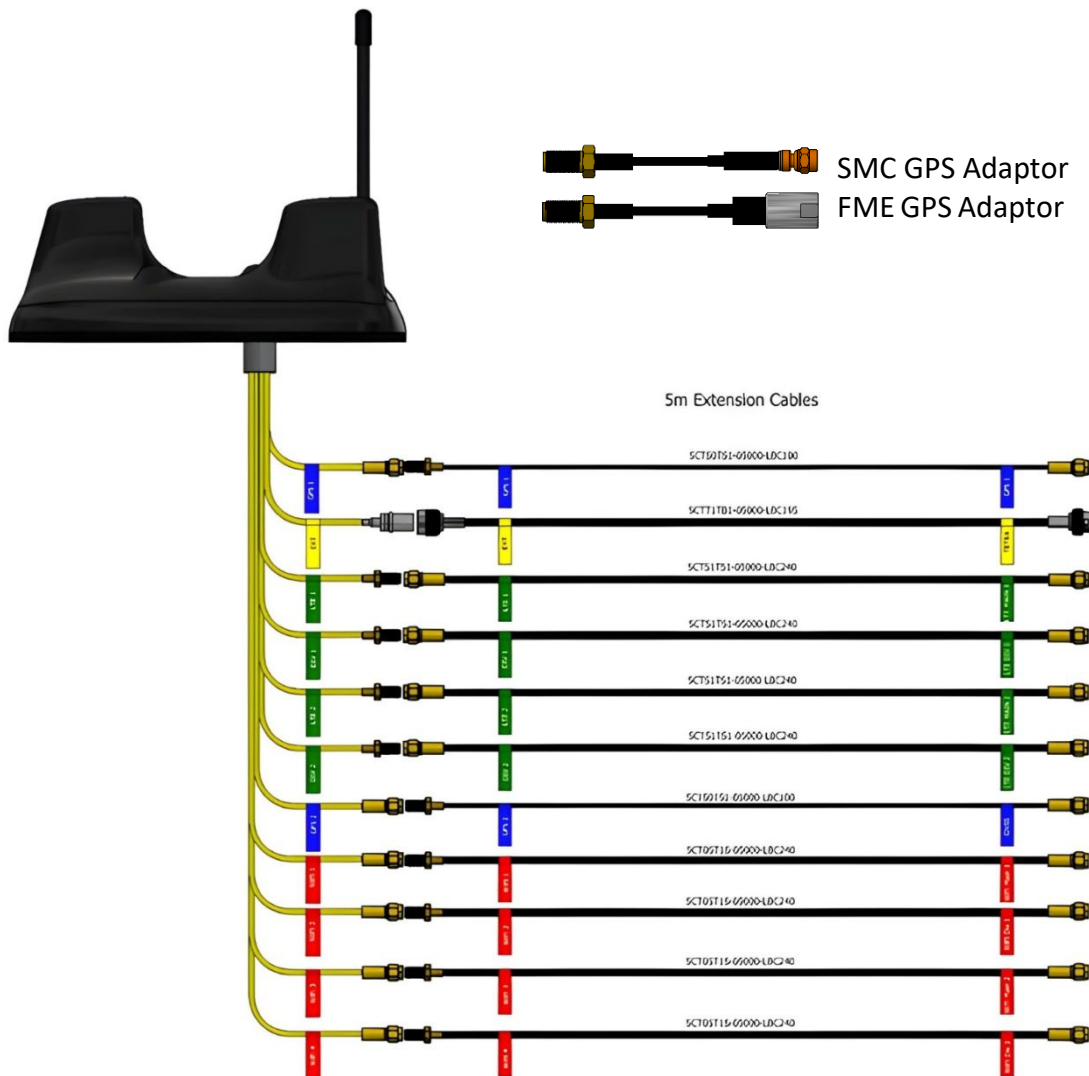
Part No.	8000-316		
Electrical Data	TETRA	2G 3G 4G 5G	WiFi
Frequency Range (MHz)	380 - 430 MHz	698-6000 MHz	2.4 GHz & 5.8GHz
Band	TETRA	4x Wideband LTE 4x4 MiMo	4x Dual Band Wi-Fi 4x4 MiMo
VSWR	<2.1:1 TYPICALLY 1.5:1	<2.1:1 TYPICALLY 1.5:1	<2.1:1 TYPICALLY 1.5:1
Gain	5dBi	Minimum 4dBi	Minimum 4dBi
Isolation	-	<-25dB	<-25dB
Polarisation	Vertical	Vertical	Vertical
Pattern	Omni-directional	Omni-directional	Omni-directional
Impedance	50Ω	50Ω	50Ω
Max Power Input (W)	25W	10W	10W
GPS/GLONASS			
Frequency Range (MHz)	1562-1612		
VSWR	<2:1		
Gain	26dB		
Polarisation	Right Hand Circular		
Operating Voltage	3-5v DC (fed via coax, each port is DC isolated)		
Cable	2x RG316 Terminated to SMA (m)		
Mechanical Data			
Dimensions (mm)	H76xW197xL227 *		
Operating Temp (°C)	-40 / +80°C (-40° / 176°F)		
Material	ABS		
Colour	Black		
Weight (g)	600		
Cable Data			
Cable Type	RG316	RG316	RG316
length (mm)	300	300	300
Diameter	2.8	2.8	2.8
Termination	TNC (f)	SMA (f)	SMA (m) Reverse Polarity
Mounting Data			
Mounting Type	Panel mount with adhesive pad		
Mounting Hole (mm)	19mm		

Subject to change without prior notice. *Excluding optional whip

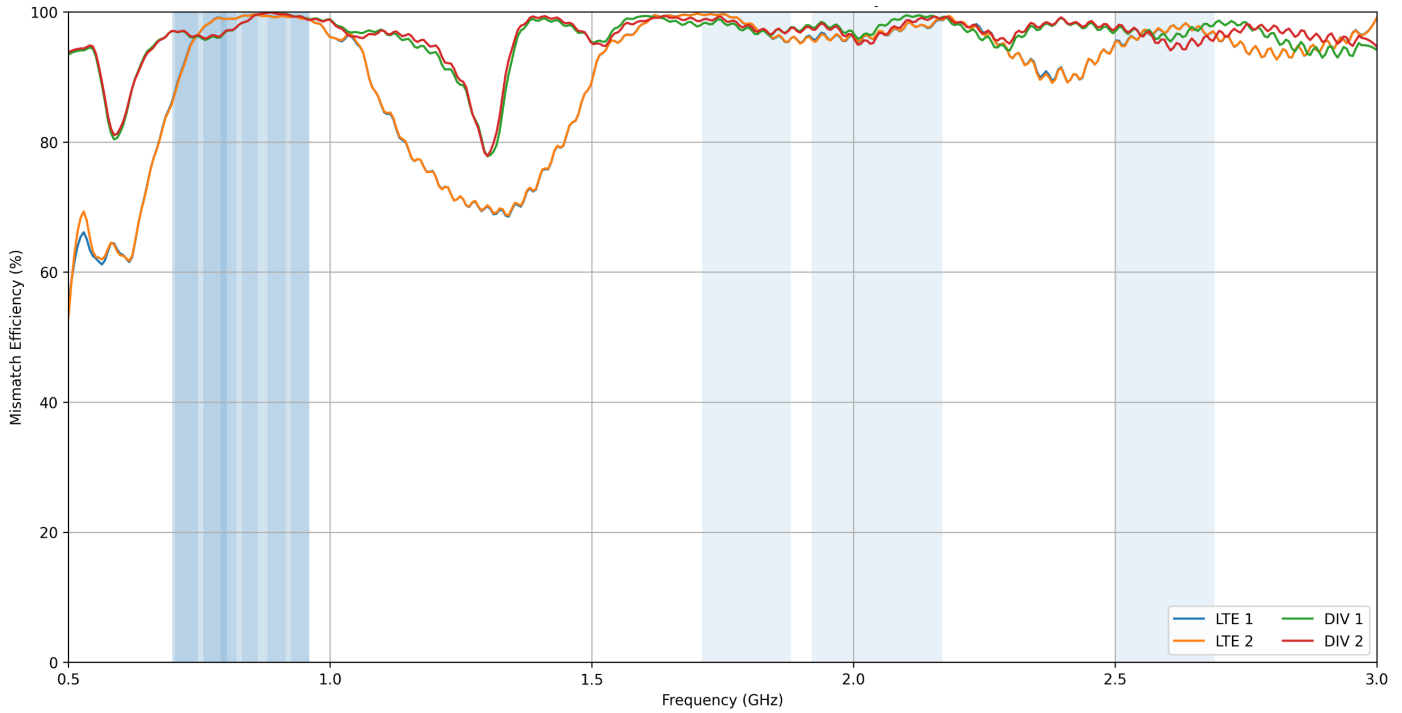
Supplied Coax Extension Cables

Coax Cables	4x LTE	4x Wi-Fi	1x GPS	1x Tetra	1x GPS
Cable Type	SBC240	SBC240	SBC100	SBC195	SBC100
length	5m or 3m	5m or 3m	5m or 3m	5m or 3m	5m or 3m
Diameter (mm)	6.1	6.1	2.8	4.95	2.8
Min. Bend Radius (mm)	30	30	14	25	14
Operating Temp. °C	-40-80	-40-80	-40-80	-40-80	-40-80
Termination	SMA (m)	SMA Reverse Polarity (m)	SMA (m)	BNC (m)	SMA (m) – Motorola and Sepura adaptors supplied.
Labeling	LTE M & LTE A	WiFi M & WiFi A	GPS	TETRA	GPS TETRA

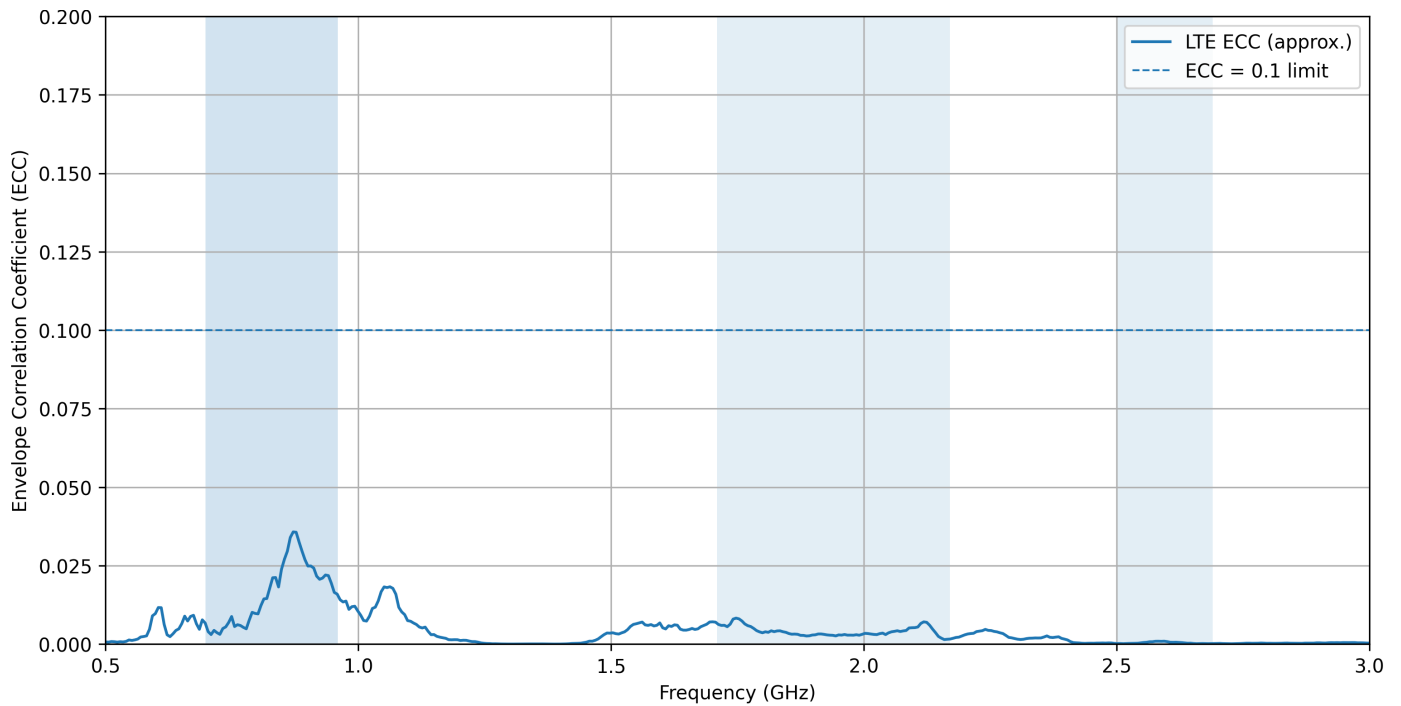
Cable Diagram



LTE / DIV Ports - Mismatch Efficiency

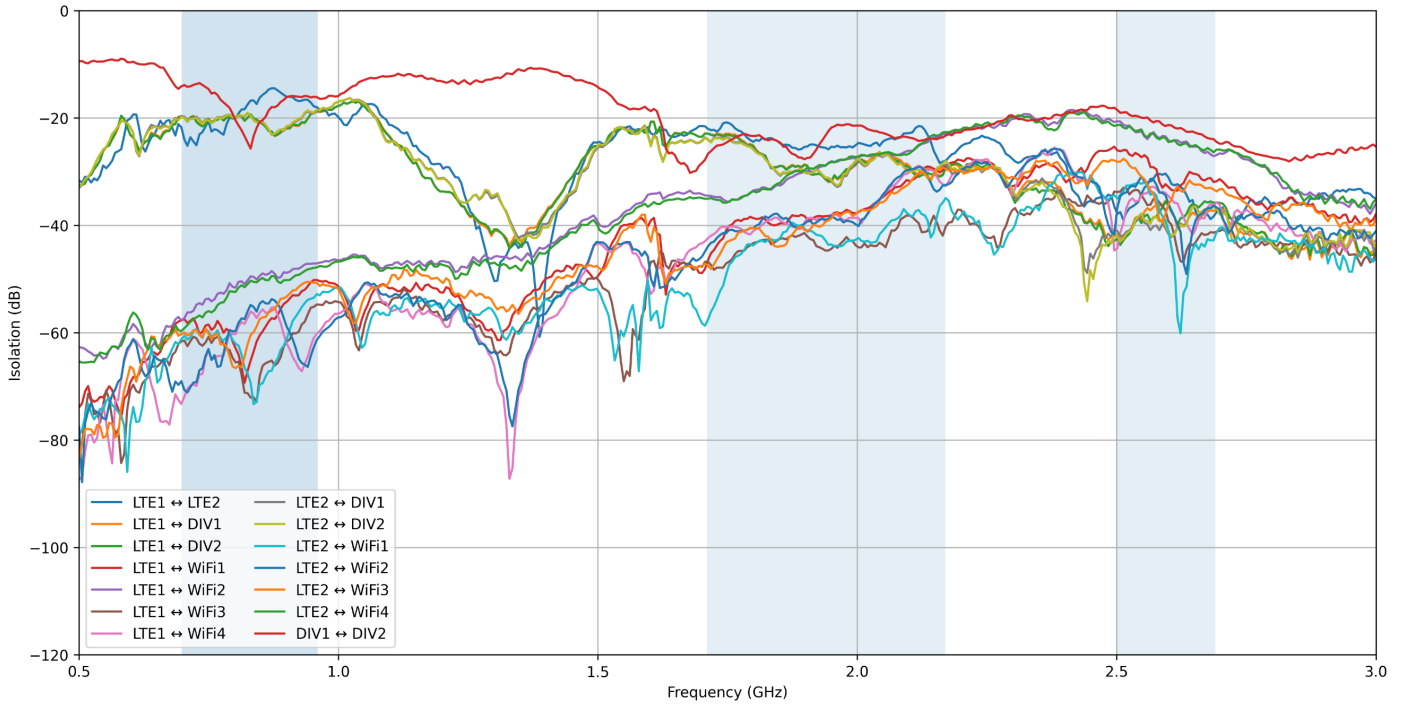


LTE ECC (Cut at 3 GHz

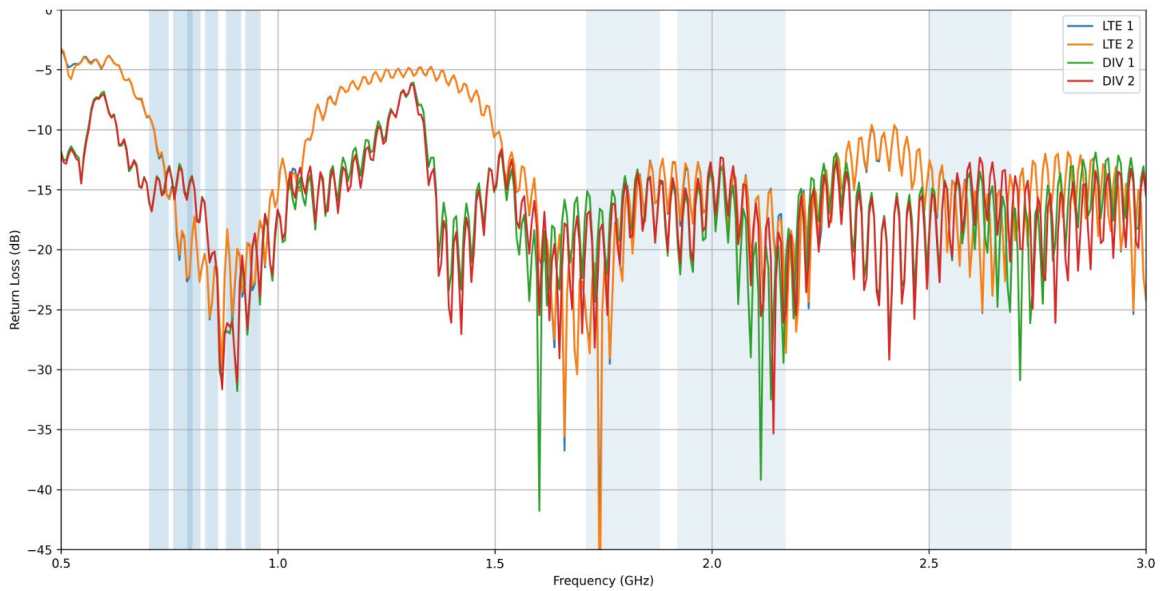


Subject to change without prior notice.

LTE Port Isolation (Cut at 3 GHz)

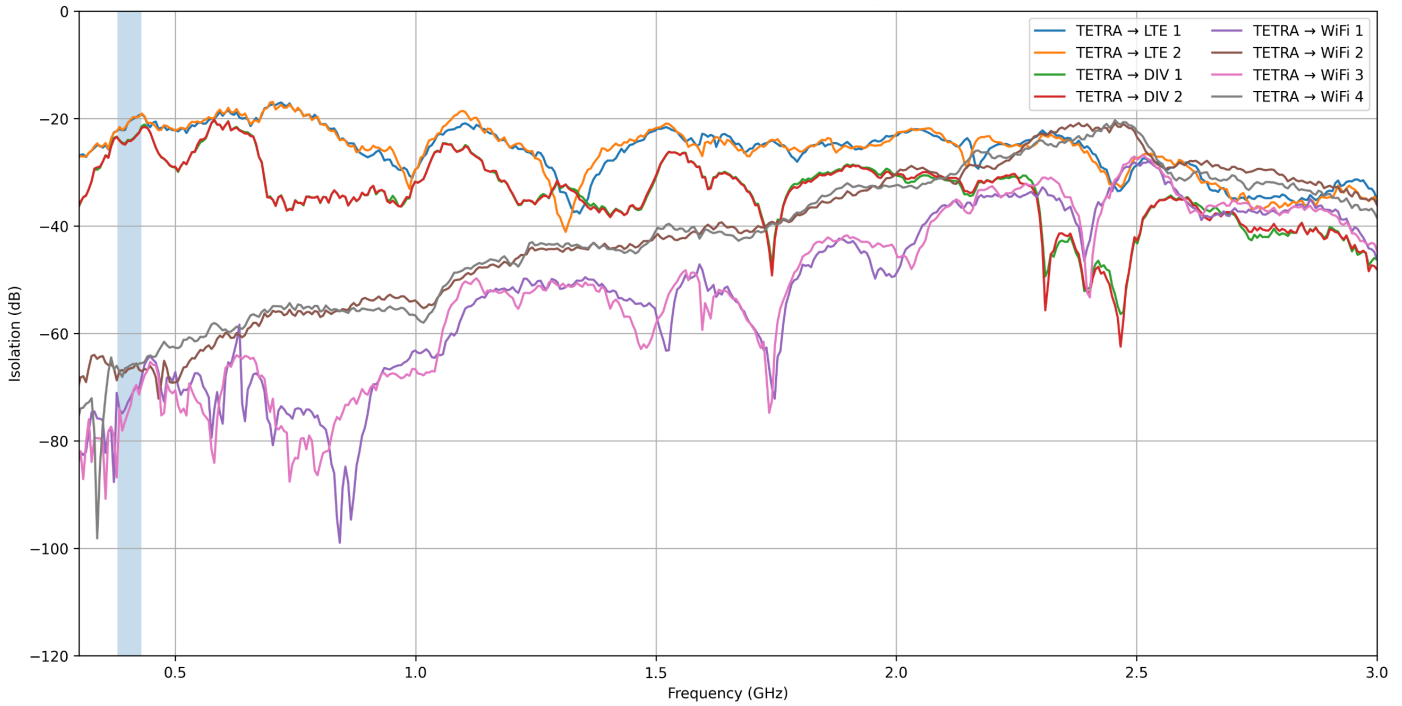


LTE Return Loss

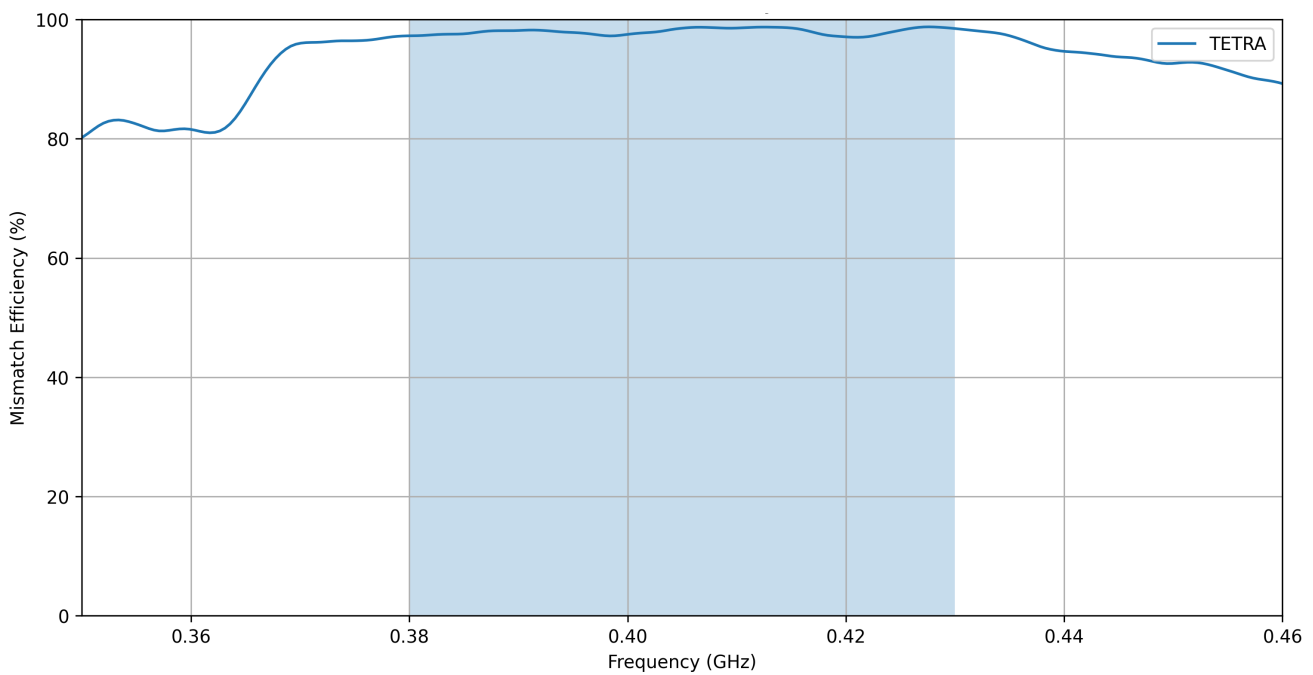


Subject to change without prior notice.

TETRA Port Isolation to All Other Parts (S21)

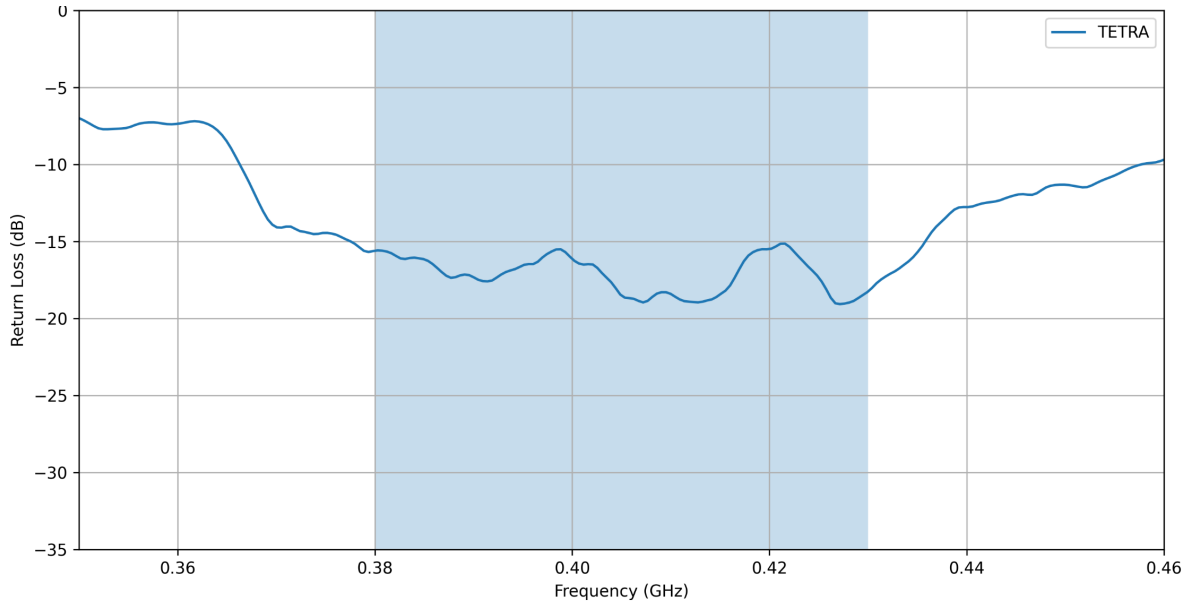


TETRA Port -Mismatch Efficiency (380-430 MHz)

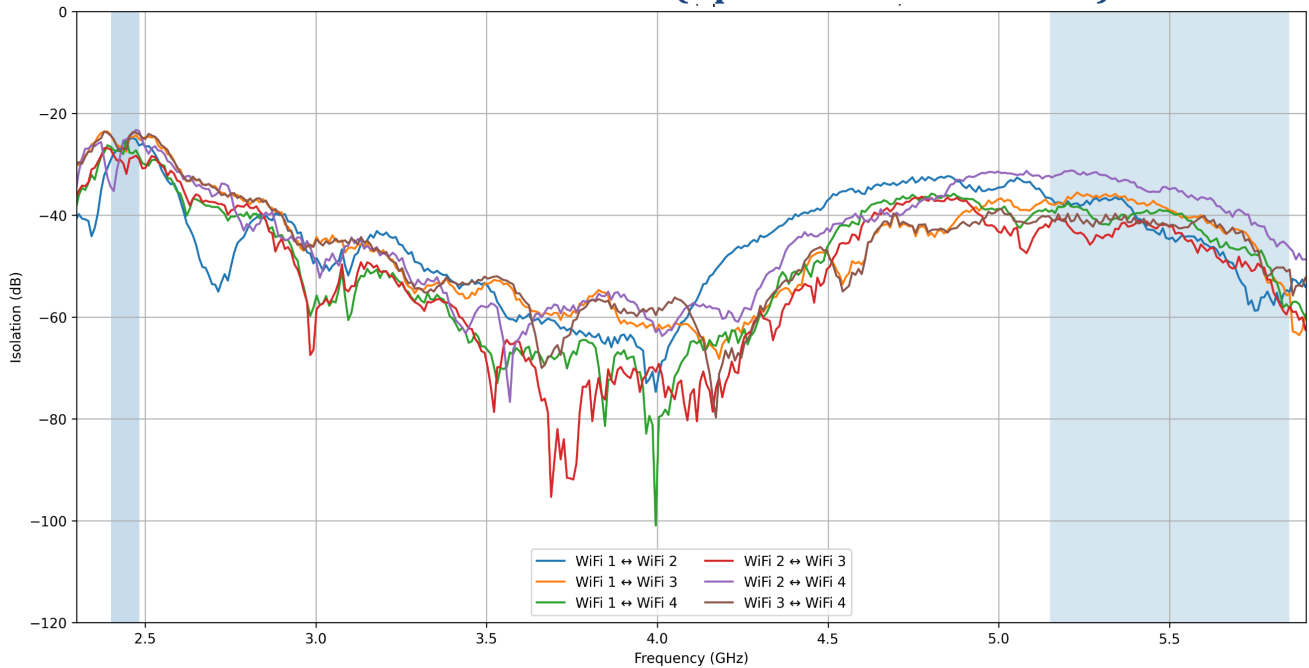


Subject to change without prior notice.

TETRA Antenna - Return Loss (380-430 MHz)

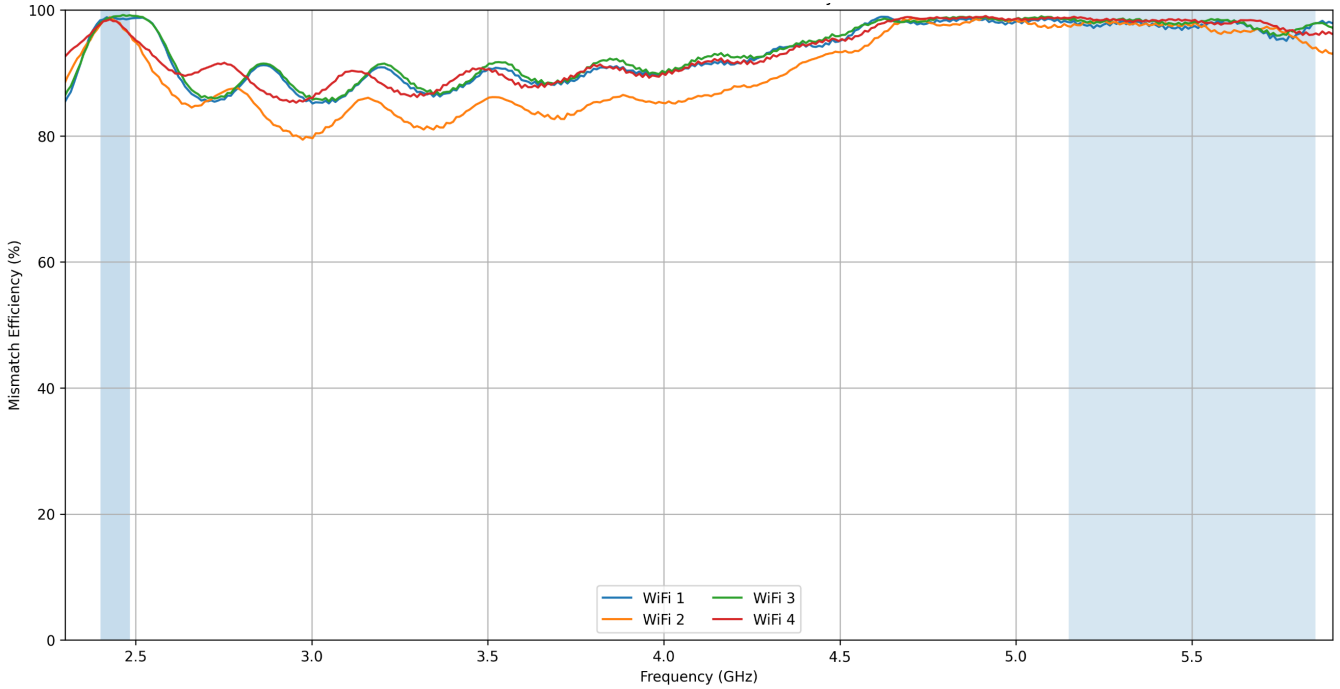


WiFi Port-to-Port Isolation (Updated Measurements)

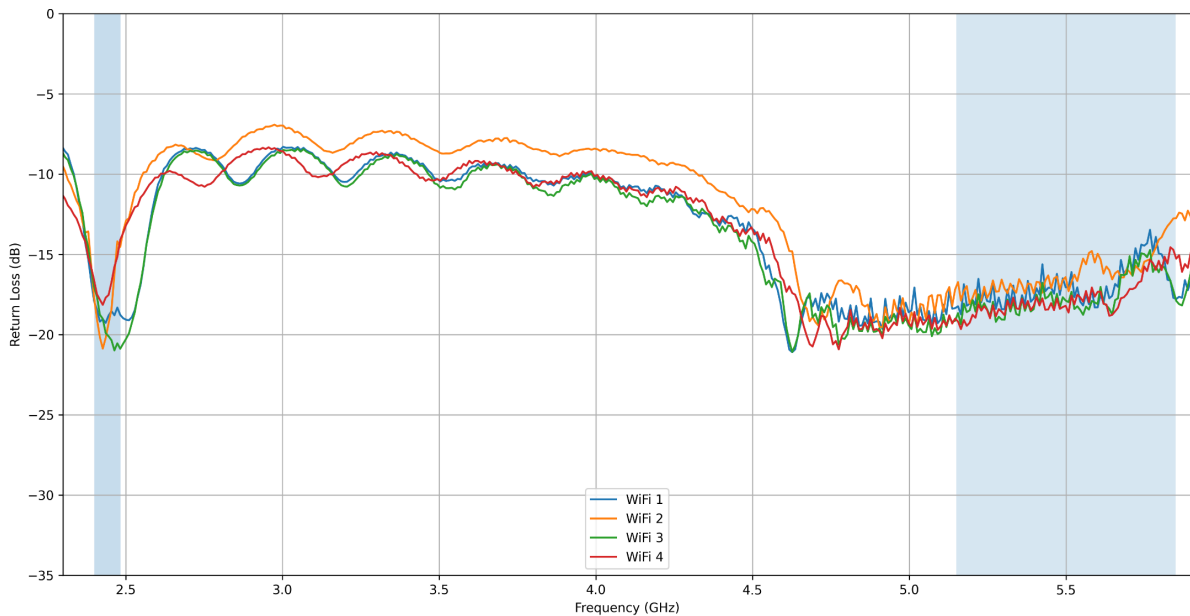


Subject to change without prior notice.

WiFi Ports - Mismatch Efficiency



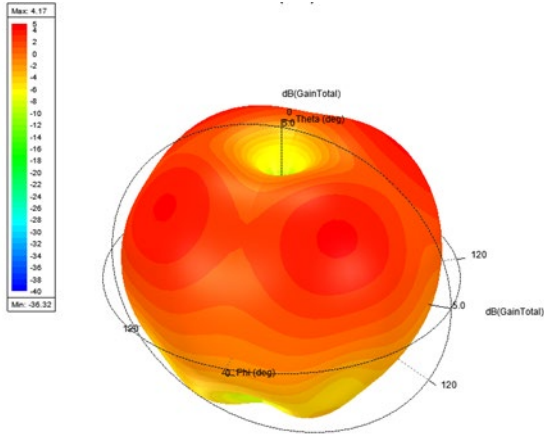
WiFi Antenna - Dual-Band Return Loss



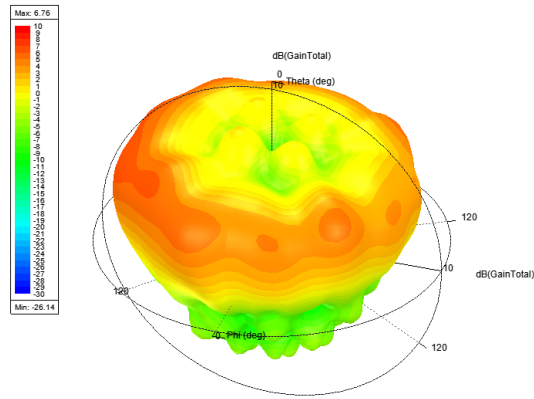
Subject to change without prior notice.

3D Radiation Pattern

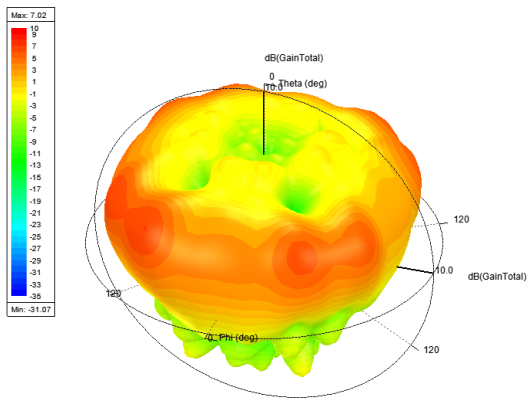
820MHz



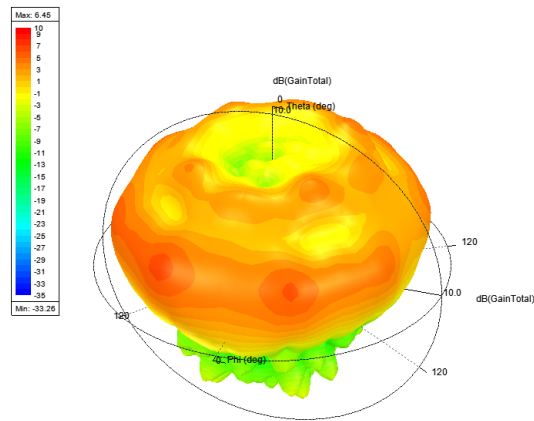
1820MHz



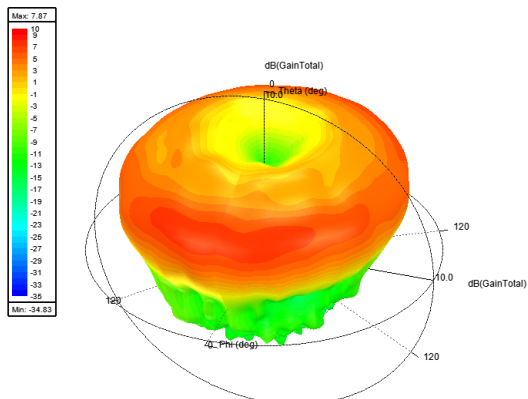
2140MHz



2600MHz



3600MHz



Subject to change without prior notice.

Sure Antennas. 6 Woodway Court, Thursby Rd, Bromborough, Merseyside CH62 3PR, United Kingdom
Schiphol Airport Tetra, Transpolis Park, Siriusdreef 17-27, 2132 WT Hoofddorp, Netherlands

T. +44 (0)151 363 7377 | E. sales@sure-antennas.com

