

The 'Mallard' is a low-profile, multifunction antenna designed for blue-light and amber-light vehicle fleets, combining up to 9 functions within a single panel-mounted unit. With optional fitting kits, the 'Mallard' can be installed using the existing OEM mounting hole, preventing the need to drill additional holes and maintaining OEM functions.

This variant supports **3 Functions** including **2x LTE** and **1x GPS**

Supplied Coax Extension Cables

Coax Cables	2x LTE	1x GPS
Cable Type	SBC240	SBC100
length	5m or 3m	5m or 3m
Diameter (mm)	6.1	2.8
Min. Bend Radius (mm)	30	14
Operating Temp. °C	-40-80	-40-80
Termination	SMA (m)	SMA (m)
Labeling	LTE M & LTE A	GPS



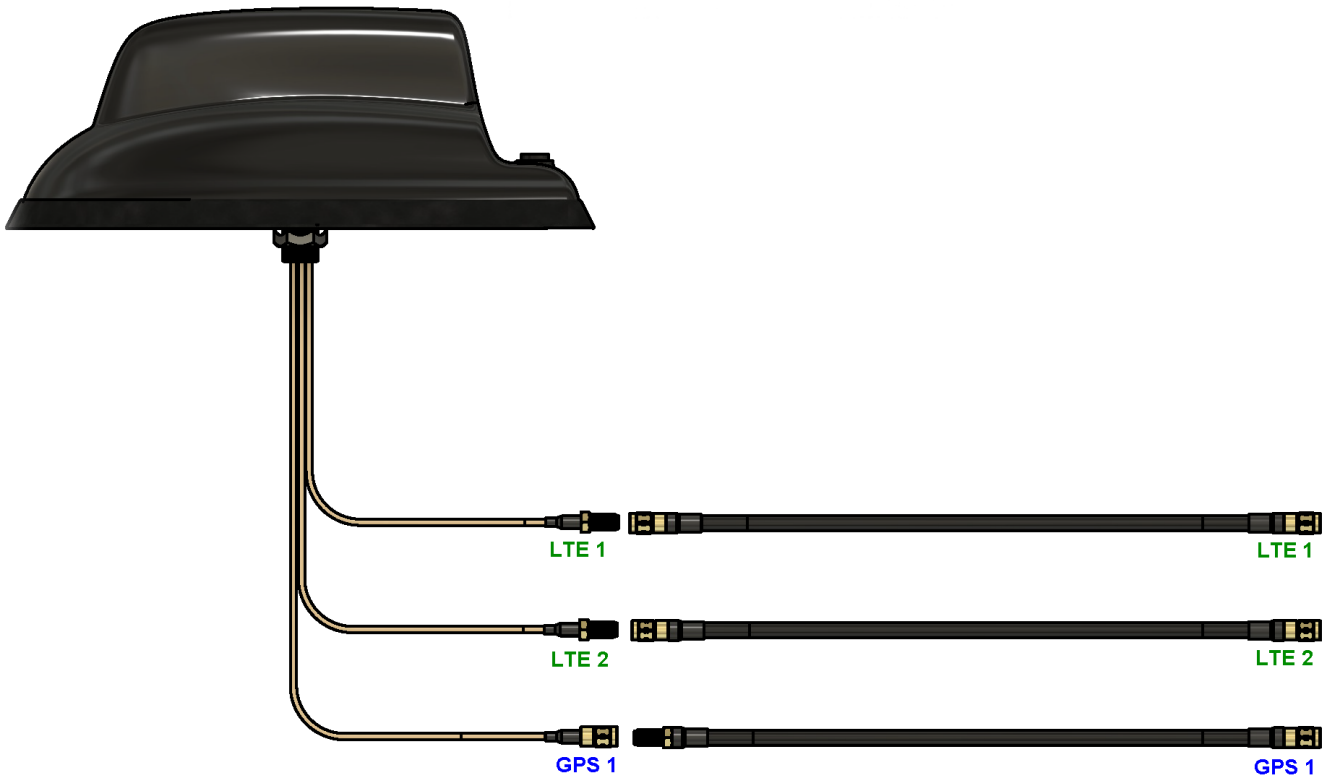
Technical Specifications

Part No.	7000-313
Electrical Data	2G 3G 4G 5G
Frequency Range (MHz)	698-6000 MHz
Band	2x2 MiMo 2G 3G 4G 5G
VSWR	<2.1:1 TYPICALLY 1.5:1
Gain	Minimum 4dBi
Isolation	<-25dB
Polarisation	Vertical
Pattern	Omni-directional
Impedance	50Ω
Max Power Input (W)	10W
GPS/GLONASS	
Frequency Range (MHz)	1562-1612
VSWR	<2:1
Gain	26dB
Polarisation	Right Hand Circular
Operating Voltage	3-5v DC (fed via coax)
Cable	2x 230mm RG316 Terminated to SMA (m)
Mechanical Data	
Dimensions (mm)	H80xW70xL230
Operating Temp (°C)	-40 / +80°C (-40° / 176°F)
Material	ABS/PC
Colour	Black
Weight (g)	310
Ingress Protection	IP66
Cable Data	
Cable Type	RG316
length	160mm
Diameter	2.8
Termination	SMA (f)
Mounting Data	
Mounting Type	Panel mount
Mounting Hole (mm)	15mm
Max Panel Thickness (mm)	10mm

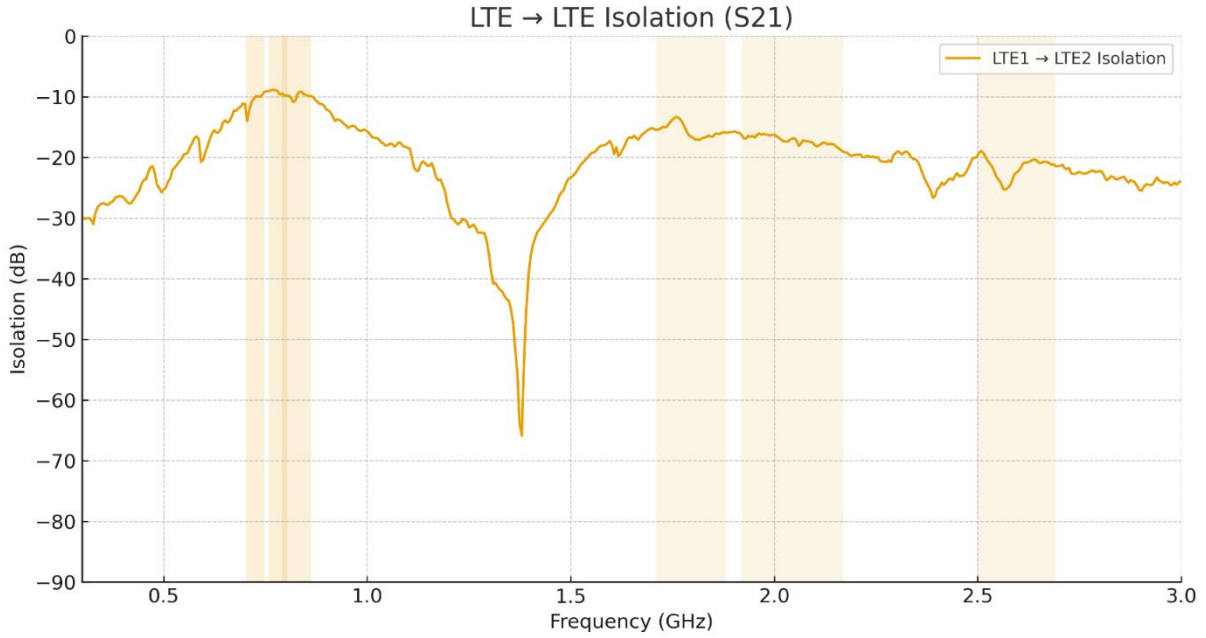
Subject to change without prior notice.

Supplied Coax Extension Cables

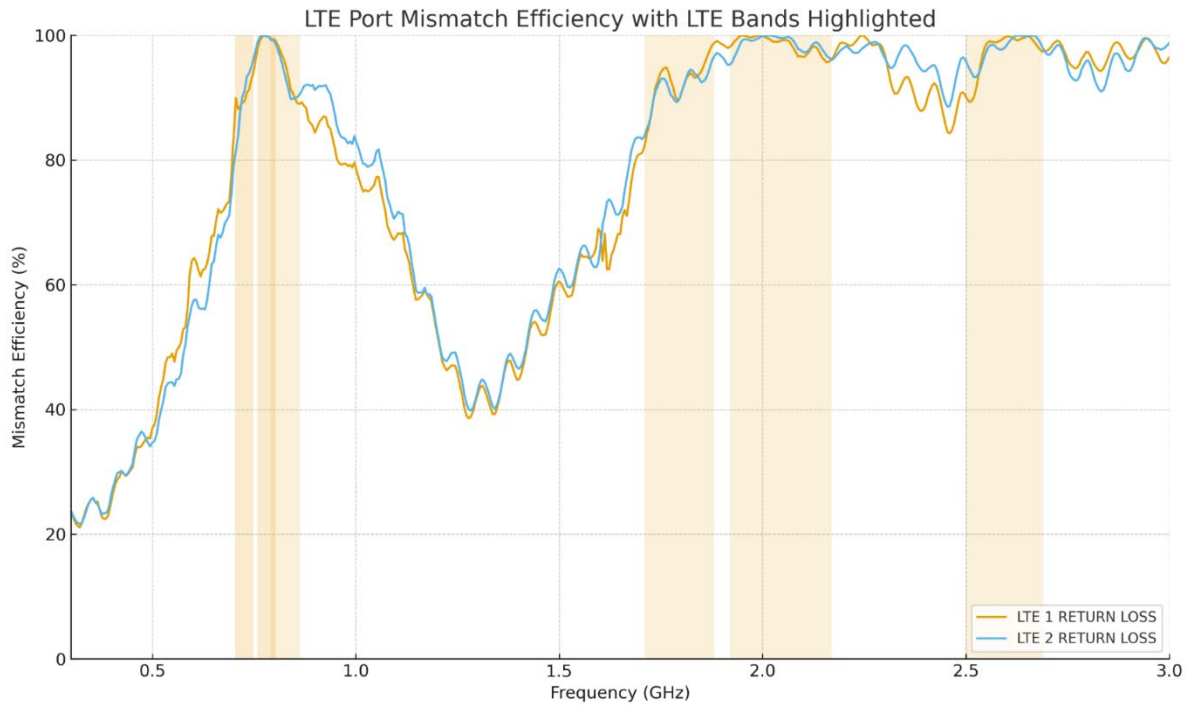
Coax Cables	2x LTE	1x GPS
Cable Type	SBC240	SBC100
length	5m or 3m	5m or 3m
Diameter (mm)	6.1	2.8
Min. Bend Radius (mm)	30	14
Operating Temp. °C	-40-80	-40-80
Termination	SMA (m)	SMA (m)
Labeling	LTE M & LTE A	GPS



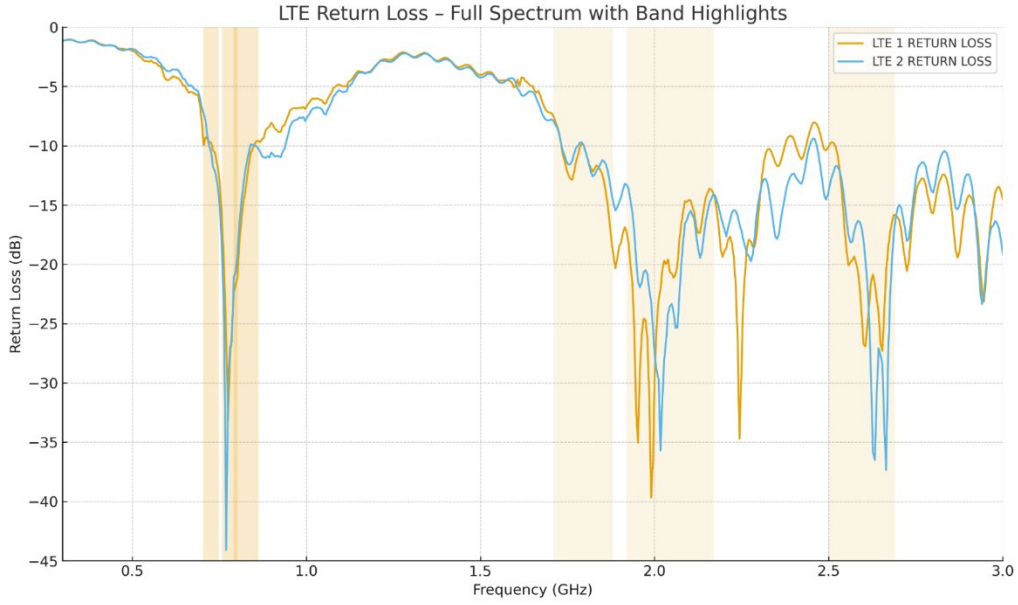
LTE Isolation



LTE Port Mismatch Efficiency

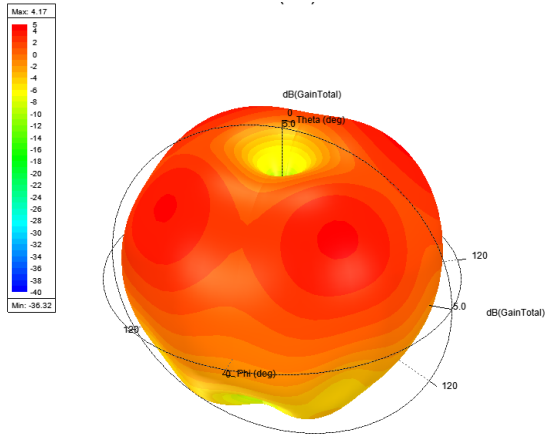


LTE Return Loss

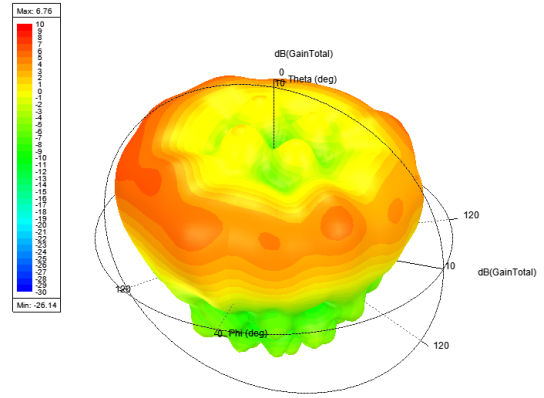


Antenna 3D Gain Plots

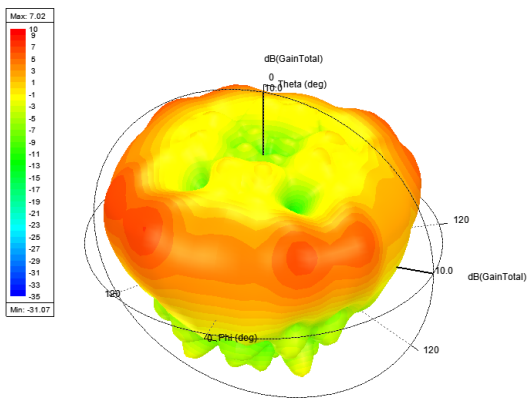
820MHz



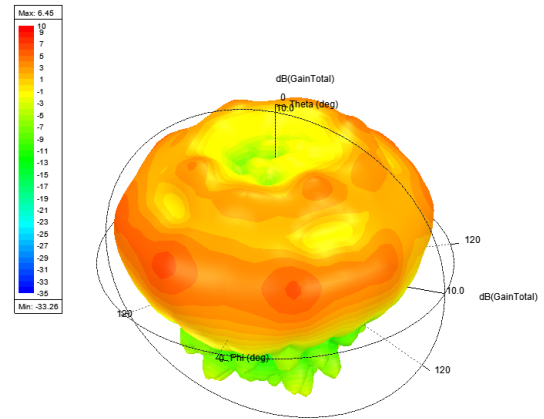
1820MHz



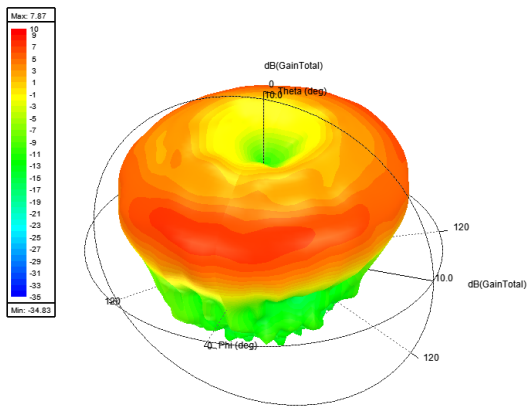
2140MHz



2600MHz



3600MHz



All graphs & diagrams subject to change without prior notice.

Sure Antennas. 6 Woodway Court, Thursby Rd, Bromborough, Merseyside CH62 3PR, United Kingdom
 Schiphol Airport Tetra, Transpolis Park, Siriusdreef 17-27, 2132 WT Hoofddorp, Netherlands

T. +44 (0)151 363 7377 | E. sales@sure-antennas.com

